

EDUCATION IN OUR PARISH

St. Tammany Parish has 56 public and 24 private schools that are high performing local services for families. The St. Tammany Parish Public School District scored well overall in comparison to state school performance, achieving a “B” letter grade for the system, which is significantly higher than the overall state performance.

Scores for each public school follow below as of the 2020–2021 Louisiana Department of Education assessments based on a 2018– 2019 period of performance:

Table 18.

School	Letter Grade	Score
Abita Springs Elementary School	B	81.6
Abita Springs Middle School	B	79.2
W.L. Abney Elementary School	C	64.4
Alton Elementary School	B	76.4
Bayou Lacombe Middle School	C	72.9
Bonne Ecole Elementary School	B	78
Boyet Junior High School	B	85.6
Glynn H. Brock Elementary School	C	73.5
Carolyn Park Middle School	C	66.3
Chahta-Ima Elementary School	B	81
Clearwood Junior High School	C	71.8
Covington Elementary School	C	74.1
Covington High School	C	79.9
Fifth Ward Junior High School	B	83.4
Florida Avenue Elementary School	C	66.2
Folsom Elementary School	A	93.7
Folsom Junior High School	B	79.5
Lee Road Junior High School	B	80.2
Little Oak Middle School	B	84.2
E. E. Lyon Elementary School	B	80.7
Madisonville Elementary School	B	86.8
Madisonville Junior High School	B	84.8
Mandeville Elementary School	A	90.8
Mandeville High School	A	99
Mandeville Junior High School	A	99
Mandeville Middle School	B	89.8
Pearl River High School	B	87.4

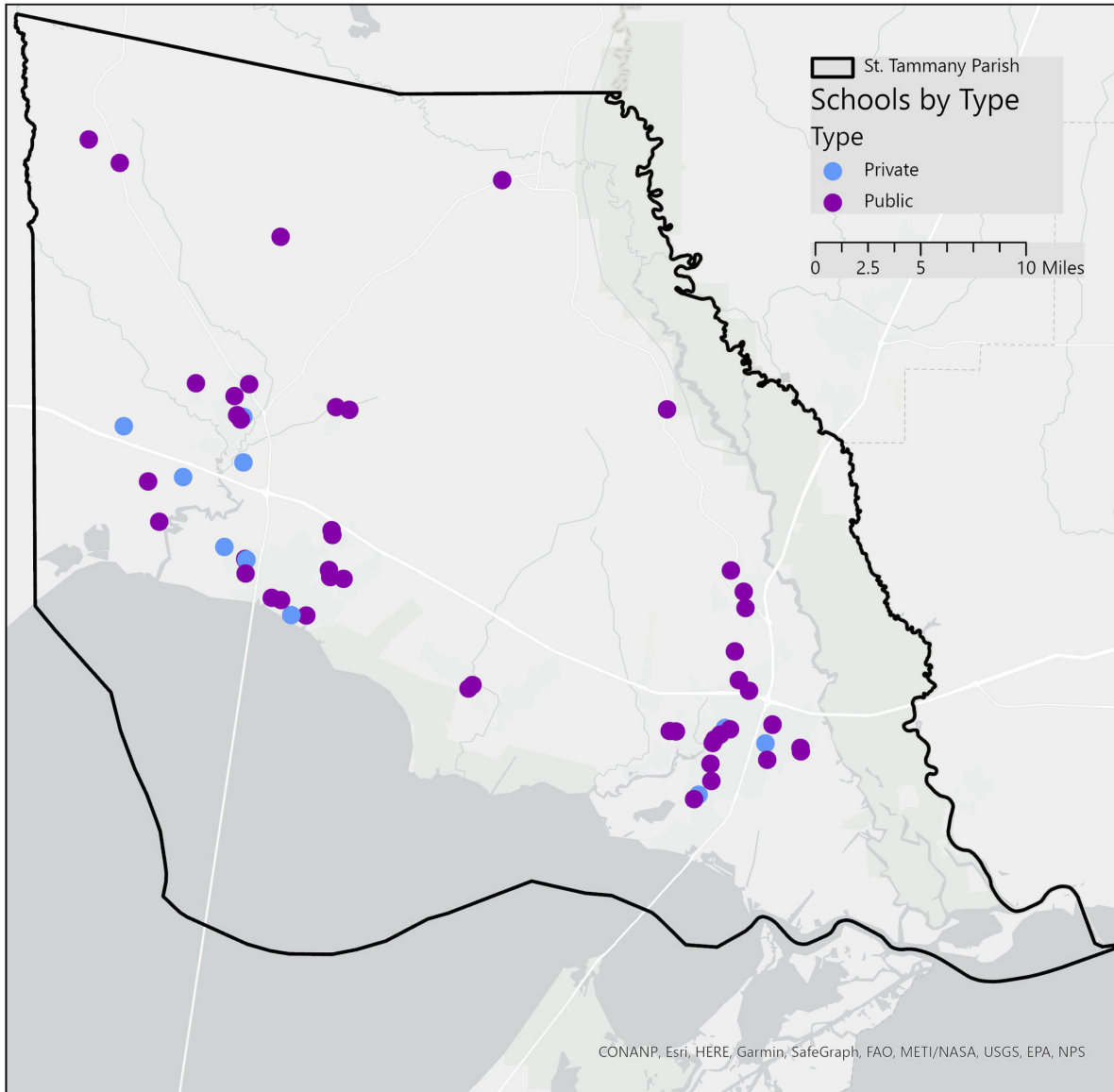


Pine View Middle School	C	64.6
William Pitcher Junior High School	C	65.2
St. Tammany Junior High School	C	66.4
Creekside Junior High	C	66.5
Salmen High School	C	72
Sixth Ward Elementary School	B	84.6
Slidell High School	B	79.9
Slidell Junior High School	B	75.8
Northshore High School	A	96.1
Bayou Woods Elementary School	B	78.2
Riverside Elementary School	B	82.3
Woodlake Elementary School	B	88.6
Honey Island Elementary School	B	85.8
Whispering Forest Elementary School	B	78.6
Cypress Cove Elementary School	B	85.8
Pontchartrain Elementary School	A	96.2
Tchefuncte Middle School	A	93.3
Fontainebleau High School	A	95.6
Fontainebleau Junior High School	B	86.1
Magnolia Trace Elementary School	A	92.4
Lake Harbor Middle School	A	91
L. P. Monteleone Junior High School	A	92.9
Little Pearl Elementary School	B	82.3
Marigny Elementary School	A	92.4
Lakeshore High School	A	90.3
Henry Mayfield Elementary School	C	71.1
Joseph B. Lancaster Elementary School	B	86.8
Abney Elementary Early Childhood Center	C	64.4



Public and Private Schools in St. Tammany, 2022

Map 14.



The 2022 high school graduation rate in St. Tammany was 84%, which is consistent with the state of Louisiana. Per the University of Nebraska's Buffett Early Childhood Institute, 90 percent of a child's brain is formed by the time they turn six. The neural connections formed during early childhood (before age 5) are critically important for the future development of a child and can highly impact their future education, earnings, and health.

While the public and private school system sufficiently serves the majority of school-age children through high-school, there are limited affordable educational options for children under 5. In rural areas located outside the immediate vicinity of Mandeville, Covington, or Slidell, this disparity is more pronounced. Investments in early childhood education are critical to both positioning St. Tammany's children for future success and supporting working families.



TRANSPORTATION IN OUR PARISH

A Parish Connected to its Neighbors

Covering much of Lake Pontchartrain's Northshore, St. Tammany residents regularly travel between St. Tammany Parish, Tangipahoa Parish, Orleans Parish, and Mississippi.

Interstate-12, US Highway 190, and Louisiana State Routes 21, 22, 25, and 41 all are vital to residents' daily activities and livelihoods.

The Louisiana Causeway connects St. Tammany Parish with a direct connection to Jefferson Parish, as an alternative gateway to the Southshore from driving through the City of Slidell. **Although a changing transportation landscape may be on the horizon, St. Tammany Parish remains a community that drives to get around because natural features of the landscape and major transportation corridors create an environment that encourages growth across larger distances.**

For those with limited access to transportation, development that is spread over many miles offers limited options in where to eat, shop for groceries, access health care or find employment.



Home & Work: A Car-Dependent Connection

Larger distances require increased commuting time and less flexible (or active) transportation options (such as walking or riding a bicycle), which can unintentionally promote daily, pervasive sedentary habits.

In another time when cars were only used for leisurely drives, fans of Le Corbusier's 'Radiant City' would rejoice knowing that St. Tammany Parish residents have a longer average daily commute time than the rest of Louisiana by approximately 15.8%.

Today this higher daily average is less about enjoyment and more a reflection that St. Tammany residents are more likely to live far from their jobs. According to the U.S. Census, in 2021:

- Over three quarters of parish residents experience daily commute times greater than 30 minutes.
- Approximately 63.6% of parish residents spend over 35 minutes commuting to work each day and over an hour traveling to and from work each day.
- 31.3% of parish residents are burdened with a commute time of 60 minutes or more.

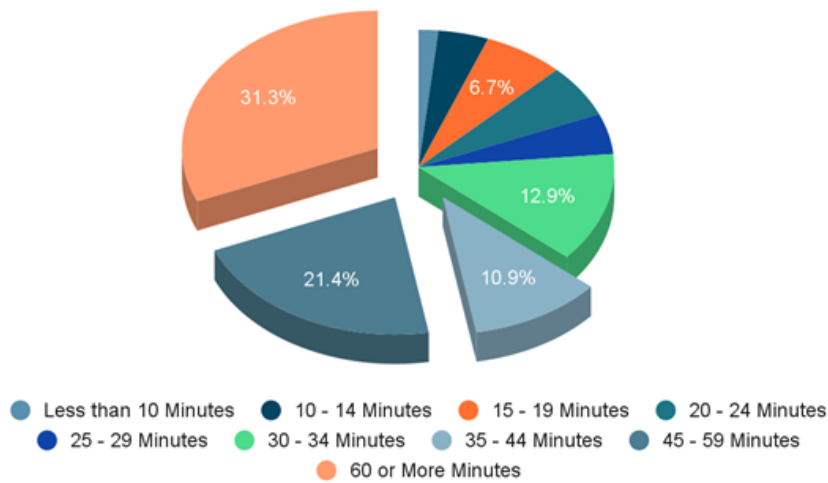


Image Credit: St. Tammany Parish Government
Image Description: People sitting on bench next to bikes



Figure 13.

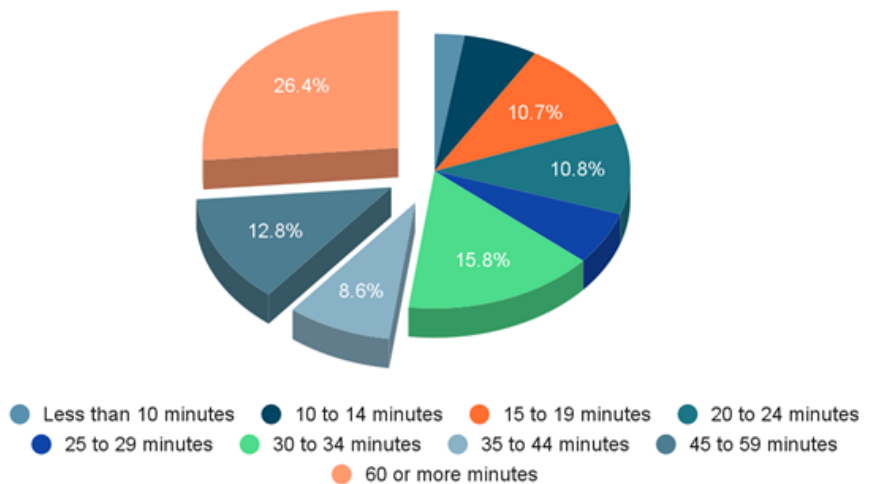
Commuter Travel Time, St. Tammany Parish, 2021



Source: United States Census Bureau. (2021). St. Tammany Parish, Louisiana [Chart]. United States Census Bureau

Figure 14.

Commuter Travel Time, Louisiana, 2021



Source: United States Census Bureau. (2021). St. Tammany Parish, Louisiana.

With nearly a third of parish residents having a daily commute of over an hour, it is likely that either people are not able to live in their desired location, or that they live exactly where they would like to and their will to settle in that community outweighs the desire to live close to their place of employment.

Unfortunately, time spent driving to and from work leaves less time for recreation and enjoyment of the natural resources available to St. Tammany residents, which can have negative long-term impacts on the health and wellness of the community. Within the Parish, residents can find natural waterways for swimming and watersports, hunting grounds, and a regional walking and bicycle trail.



Vehicle Access, 2021

Table 19.

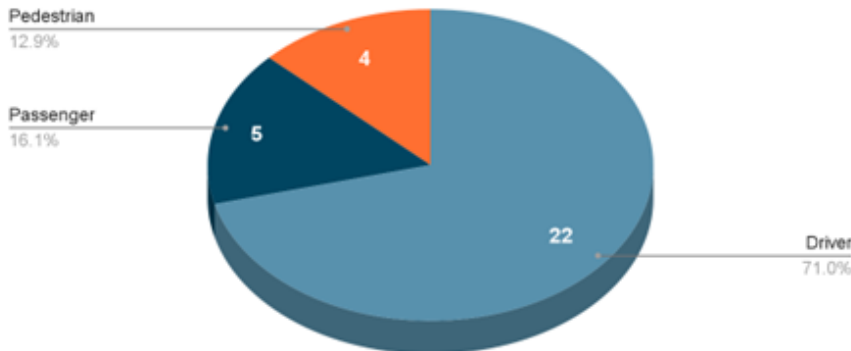
Vehicles Available	Parish-Wide #	Parish-Wide %	Owner-Occupied #	Owner-Occupied %	Renter-Occupied #	Renter-Occupied %
No Vehicles Available	4,456	4.3%	2,578	3.10%	1,878	9%
1 Vehicle	30,206	29.2%	20,391	24.70%	9,815	46.9%
2 Vehicles	44,813	43.3%	37,441	45.30%	7,372	35.2%
3 or More Vehicles	24,068	23.2%	22,185	26.90%	1,883	9%

Source: United States Census Bureau. (2021). *Physical Housing Characteristics for Occupied Housing Units*.

In 2021 the rate of households without access to a private automobile was disproportionately higher among households that rent compared to owner-occupied households.

Trends in Traffic Fatalities

Traffic Fatalities, St. Tammany Parish, 2022

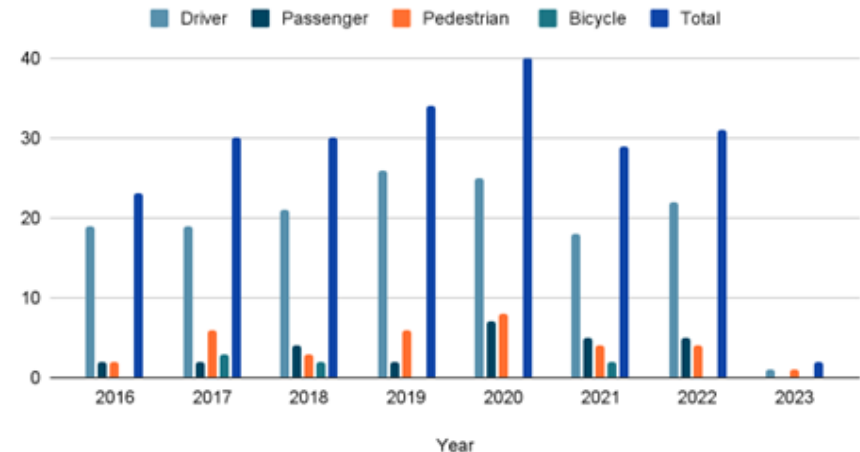


Source: Louisiana State University. (2023). *Fatal Crash Report for St. Tammany Parish*.

Figure 16.

Figure 15.

Traffic Fatalities, St. Tammany Parish, 2016 - 2023

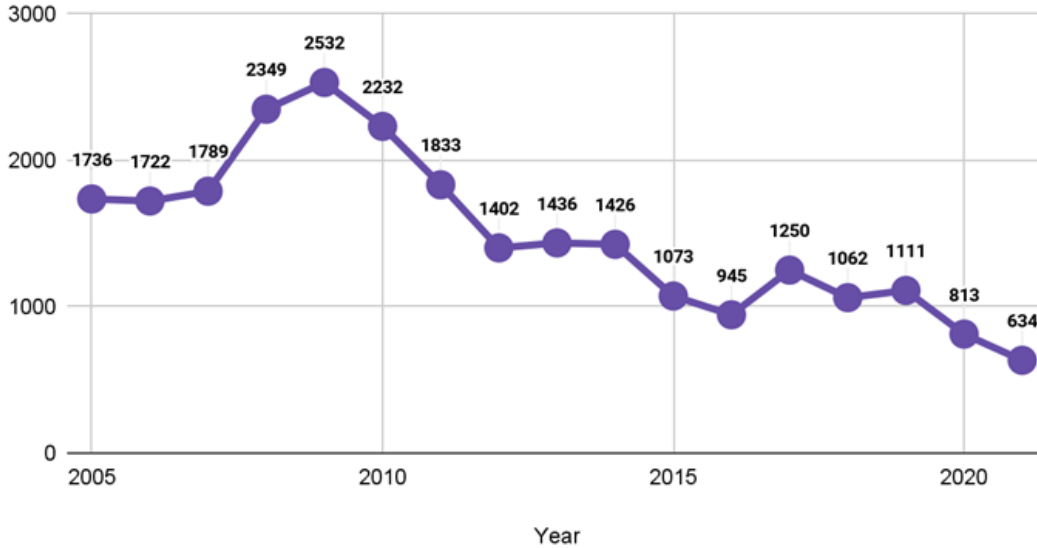


Source: Louisiana State University. (2023). *Fatal Crash Report for St. Tammany Parish*.



DWI Reports, St. Tammany Parish, 2005 - 2021

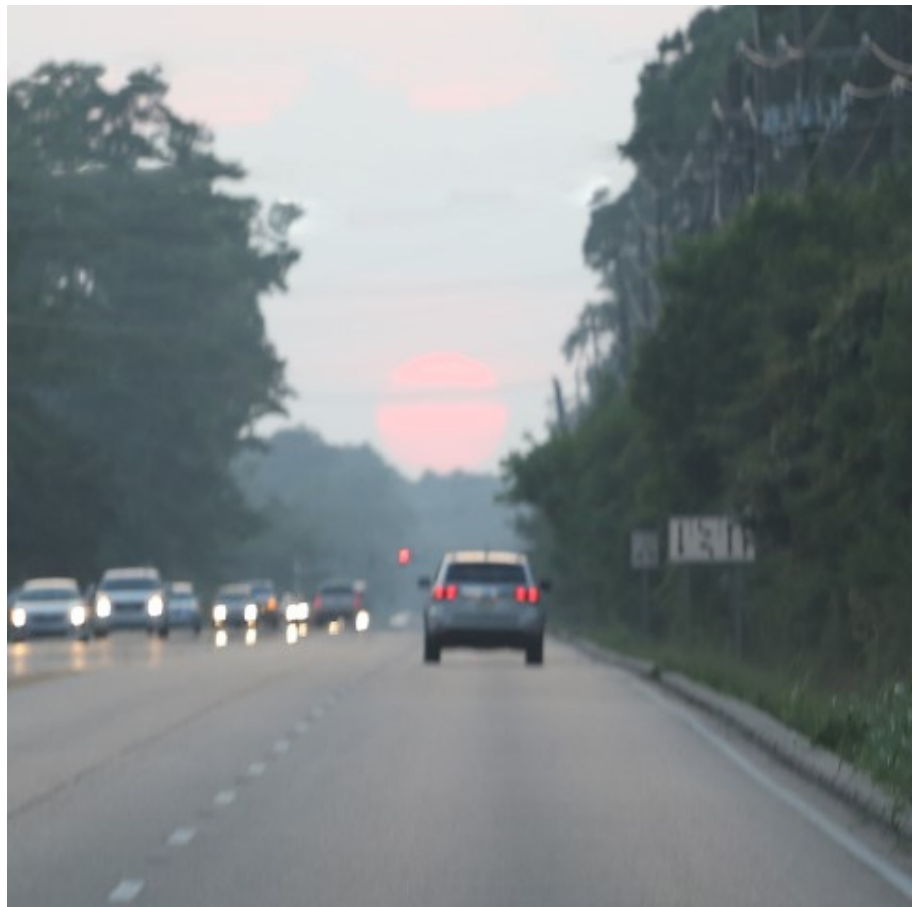
Figure 17.



Source: Louisiana State University. (2023). DWI Reports for St. Tammany Parish.

Consistent with data in **Figure 16**, urban trends around the globe showed a decline in traffic fatality rates up until the beginning of the Covid-19 pandemic. Unfortunately, for many communities including St. Tammany Parish, 2020 was one of the deadliest years for traffic fatalities in recent memory.

Though traffic fatalities have not diminished over the past decade and in 2022 St. Tammany Parish experienced traffic fatalities at rates consistent with neighboring South Louisiana parishes, fewer rates of driving while under the influence (or DWI) undoubtedly makes streets safer. As illustrated in **Figure 17**, reports of DWI's in St. Tammany Parish show a declining trend since 2005. Continued work in educational campaigns and programs that discourage unsafe driving habits will help to continue to lower traffic fatalities and drunk driving rates.



Source: St. Tammany Parish Government
Image Description: St. Tammany roads





Source: St. Tammany Parish Government
Image Description: St. Tammany Mobile Command bus

Public Transportation

To support the growing need for supportive senior services, The Council on Aging currently runs an on-demand transportation service for St. Tammany Parish (called 'COAST') that helps senior residents move to and from errands and appointments within parish boundaries. Participants can make an appointment 24 hours in advance for a COAST vehicle to pick them up and take them to where they would like to go.

STARC (Services, Training, Advocacy, Resources, and Community Connections) of Louisiana provides a similar on-demand transportation service to help people attend appointments and reach services. However, STARC is more narrowly focused on residents with physical and mental disabilities and includes transportation to areas within the immediate surrounding parishes.

With the services provided by both The Council on Aging and STARC, the movement of individuals without access to private automobiles remains an issue in St. Tammany Parish due to increased auto-dependency in South Louisiana.

Vulnerable populations such as people with mobility restrictions, previously incarcerated individuals, and low-income residents, need to get around the parish in order to fulfil the requirements of their daily lives. While COAST and STARC do provide some support, both programs have limited eligibility for services and hours of operation that may not align with the needs of all.

A standardized public transit system with looping routes and longer hours would benefit those in St. Tammany Parish who do not have reliable private transportation.

Alternative Transportation

St. Tammany Parish is home to the Tammany Trace – hike and bike trail stretching 31-miles. Originally a corridor for the Illinois Central Railroad, the repurpose of this retired rail line now serves St. Tammany as a comfortable trail dedicated to alternative modes of transportation. The trail spans from downtown Covington, through Abita Springs, Mandeville, Lacombe, and ends in Slidell. The recreational trail not only provides space for sport, but also for transportation. Increasing costs associated with owning a private automobile such as gas, insurance, and maintenance, lean towards small personal adjustments that aid environmental efforts, opportunities for greater socialization, stress relief through movement, and an enjoyment of the outdoors are all reasons for why a person may be inclined to supplement car trips with bicycle rides. However, in such car-dependent communities common in the United States, an individual or family's options for bicycle travel are often limited to where they feel safe and comfortable enough to ride. Usually, roads that are uncomfortable for people on bicycles are designed to prioritize automobile traffic and throughput. Conversely, roads that prioritize bicycles are designed to calm traffic, increase visibility, and account for vulnerable uses. While the Tammany Trace is an excellent example of trail-planning for active transportation, much of the Parish is without a connected active transportation network, leaving people who already rely on bicycles as their main form of transportation having to share streets with cars and trucks on roads that were not designed with a bicycle in mind. Projects that include protected bicycle lanes, sidewalk installations, bicycle rack installations, and connecting bicycle-friendly routes are all ways that St. Tammany Parish can increase the likelihood of residents choosing to walk and ride a bicycle as transportation, as well as improving safety for residents who already rely on modes of active transportation for their daily travel.



Mobility Strategies

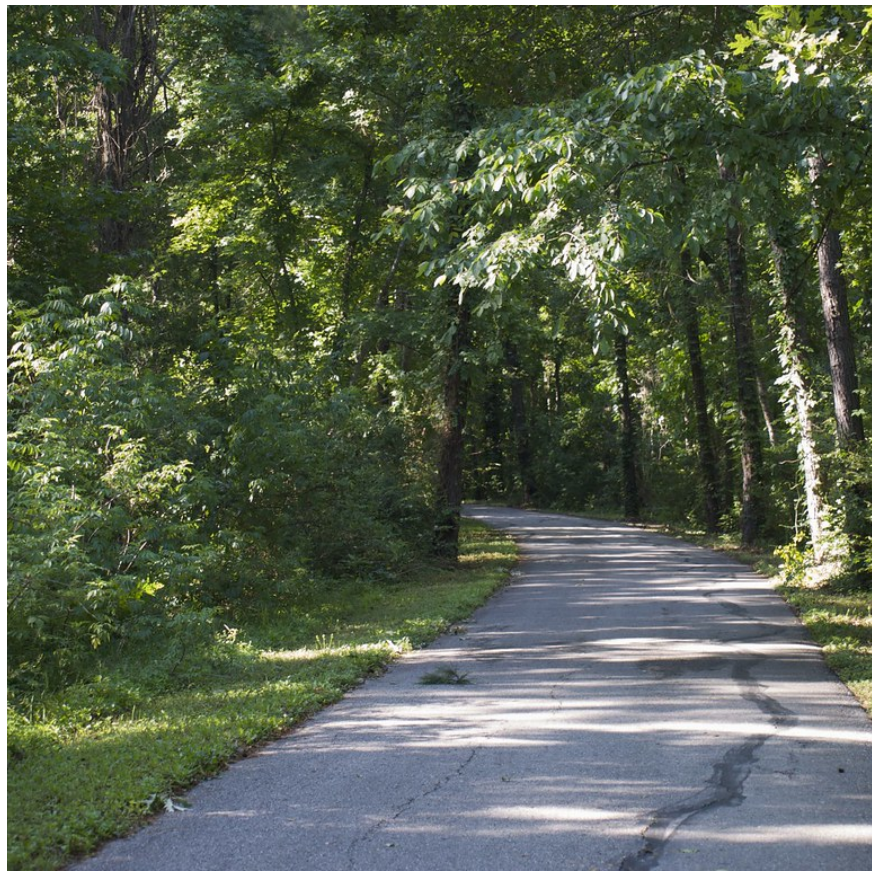
Understanding limitations involving transportation options in St. Tammany Parish is paramount when developing strategies for improving parish mobility. With nearly one third of residents spending 60 minutes or more commuting each day, St. Tammany residents have a commute time that is longer than the average Louisianian's.

While the Tammany Trace remains a popular recreational destination for the region and can serve some of the parish as a transportation route, St. Tammany Parish overwhelmingly drives where they need to go. Reliance on private automobiles for travel leaves those without a car at a disadvantage.

St. Tammany Parish should adopt mobility strategies that encourage equal access to parish resources and services regardless of whether a resident owns their own means of private transportation.

Mobility strategies include:

- Continued support for COAST and STARC operations.
- Implementation of on-demand transportation systems that benefit communities who are not served by COAST or STARC.
- Development of a comprehensive transportation plan that details parish transportation goals, including the development of a route-based public transportation option.



Source: St. Tammany Parish Government
Image Description: Tammany Trace



DISASTER RECOVERY IN OUR PARISH

Lessons Learned: How St. Tammany Parish Responded to the Covid-19 Pandemic

The Covid-19 pandemic exacerbated conditions of economic uncertainty, housing vulnerabilities, and health care disparities previously recognized in the 2018 Community Needs Assessment.

As previously noted in the housing section of this Assessment, St. Tammany Parish's population of residents who are 60 years or older has grown by 10,000 residents (enough to fill the seating capacity of Sidney Theriot stadium more than three times over) over the past five years. People 65 and older have consistently accounted for a larger share of COVID-19 deaths than those younger than 65, and represented 88% of all deaths (globally) in September 2022 [47].

Since the beginning of the pandemic, St. Tammany Parish has had an average of 26 new cases of Covid-19 per day, with a total of approximately 90,908 cases, and 939 reported deaths resulting from Covid-19, which is at least 1 in 278 residents [48].

Fortunately, **91% of St. Tammany residents received both doses of a Covid-19 vaccination**, and 64% of the same age group have received at least one additional booster dose. **Across all age groups in St. Tammany Parish, 58% of residents have received two doses of the original Covid-19 vaccine**, and 25% of residents have received at least one booster dose [49].

While educational and vaccine distribution campaigns can support increased vaccination and booster rates among the Parish's most vulnerable, **additional housing insecurities resulting from the sunset of federal rental subsidy programs should be addressed through transition planning and capacity building supportive services.**

Federal rental assistance programs responded to residents' increased housing and economic instability as rent prices continued to climb alongside massive business closures during the height of the COVID 19-pandemic (refer to the housing section of this Assessment for more detail).

Federal programs aimed to reduce anticipated increases in housing instability, and thus reduce anticipated increases in the number of unhoused people. Even with these federal programs, St. Tammany Parish witnessed an increase in unhoused parishioners after the Covid-19 pandemic, which has strained limited resources and organizations who support these populations, isolating a need for additional targeted support.

For the households reliant on STRAP (St. Tammany Rental Assistance Program) funds to subsidize monthly housing costs, difficult choices lie ahead with this program's sunset planned in 2023. **Programs that provide direct and effective transition planning and capacity building supportive services to households anticipating increased housing instability in 2024 are needed.**

Other adaptation strategies to consider to support the most vulnerable in the event of another heightened Covid-19 response include:

- Programs that include grocery and essential needs shopping for the elderly and disabled during a pandemic.
- Programs that address the "digital divide" through educational classes or supportive services that improve the digital literacy or help overcome digital literacy challenges during a pandemic, which can be an exceedingly difficult when life is abruptly moved online over in-person events or appointments.
- Finally, successful programs deployed during and immediately after the height of COVID-19 should be regularly reviewed and kept current for future use and reference.

By strengthening programs that support adaptation and acknowledge ways to make residents more resilient to shocks in changing daily routines, the Parish can learn from and be better prepared to face the next pandemic or disaster.



[47] Freed, et. al., 2022, Deaths Among Older Adults Due to COVID-19 Jumped During the Summer of 2022 Before Falling Somewhat in September.
[48] New York Times. (2023). What's going on with Covid right now?
<https://www.nytimes.com/2023/04/24/well/live/covid-cases-deaths-spring.html>
[49] Ibid.

APPENDIX A: COMMUNITY FEEDBACK

Community Survey

Desire Line LLC developed a written survey together with the St. Tammany Department of Health and Human Services (DHHS) to enable St. Tammany residents to participate in the Community Needs Assessment. The purpose of the written survey was to encourage Parish residents to define and rank their own priorities, focused on those issue areas (housing, economic development, transportation, and health) that are generally eligible for funds through Community Development Block Grant (CDBG) Entitlement funding. The written survey was developed using surveys conducted for prior Community Needs Assessments and tailored to current events, including the Covid-19 global pandemic.

The survey was published online and advertised through the St. Tammany Parish Facebook Page and through a series of events with local service providers, including the St. Tammany Parish Resource Round-Up and the St. Tammany Commission on Families. Desire Line LLC produced 1,500 stickers containing a QR code that provided a link to the survey and provided them to social service providers at the community events, to the Parish government to hand out during interactions with the public, and to the St. Tammany Parish Parole Office. The link to the survey was also distributed to St. Tammany Parish Officials, to the Parole Office, and to Resource Round-Up service providers via their listserv.

Paper copies of the survey were distributed to each branch of the St. Tammany Parish Library system and to the Parole Office. The survey was available online and in paper format between February 1 and February 28, although the online link was not formally closed until March 15.

In total, 90 participants completed the survey. Paper copies were collected at the end of the survey period, then added to an online database managed by Desire Line. All survey results were aggregated and average results are available below. When open-ended questions were asked, samples of typical survey responses are also available below.

The complete results are included in the appendix.

Public Comment Period

Desire Line LLC and the St. Tammany Department of Grants developed a one-page flyer summarizing the Community Needs Assessment (next page). Copies were handed out at the St. Tammany Commission on Families and at stakeholder events in the Parish, such as the April 26, 2023 Leadership St. Tammany Alumni Foundation Spring Revisited Breakfast.

In June 2023, the St. Tammany Department of Grants placed an ad in the St. Tammany Farmer, the Parish newspaper of record. The ad publicized two community meetings and encouraged public comment to be submitted to the Grants Department via email or mail. The meetings were held in the east and west of the Parish in order to be maximally accessible.

Public Comment Hearing #1

3:30 pm on July 10, 2023
Koop Council Chambers
21490 Koop Drive, Mandeville, LA

Public Comment Hearing #2

3:30 pm on July 12, 2023
5th Floor Council Chambers
St. Tammany Parish Government Complex
520 Old Spanish Trail, Slidell, LA 70458

No public comment was submitted during the public comment period. Survey results, however, are available as part of this appendix.

Comments and Themes

The survey data was reviewed and the following themes were identified. This summary does not limit or edit views provided by participants. There were no comments or views that were not accepted. All comments submitted to the community survey are documented in the complete results located in this appendix.

Participant Demographic Themes

- Among those surveyed, 73.3% have lived in St. Tammany Parish for more than 15 years.
- Respondents to the survey skewed above the parish median income. 48.9% (44 respondents) had an annual household income of more than \$100,000 per year. The parish median income in 2021 was \$66,582.



- 74.4% of respondents reported that they had received a Bachelor's degree or higher. This statistic skews much higher than that of the overall population; according to U.S. Census data, between 2017 - 2021 an estimated 36.4% of the population had earned a Bachelor's degree or higher.
- 75.6% of respondents reported owning their own home.

This data suggests that future outreach events should be geared toward a broader swath of St. Tammany's population, perhaps by tabling at community events or making announcements or advertisements through community centers or churches.

Summary of Comment Themes

Broadly, respondents expressed several categories of concerns:

- **Affordable housing.** Many respondents reported that it is becoming increasingly unaffordable to live in the Parish, citing the rising cost of rent, the difficulty of financing a starter home, and the rocketing costs of insurance. Some respondents expressed a desire to limit affordable housing development.

"I just know we need more affordable housing. As an employer, many of my staff come from Tangi, Washington and Hancock. They can't afford to live here."

- **More diverse housing options.** Some respondents mentioned needing "multiple levels of housing," including "mid-range apartment rental[s]," "quality, new manufactured homes" and "long term supportive housing for people living with mental illness."
- **Flood insurance.** For a question in which residents were asked to rank housing development needs in the Parish, homeowners' and flood insurance costs were ranked as the highest priority need. In open-ended questions, respondents repeatedly flagged flood insurance as a major problem. As one respondent said, "The greatest challenge facing most people will be the insurance crisis. Insurance rates have increased substantially for many in the past year and it's going to continue to increase in the next several years."

"Too much development, too fast. Traffic is a major issue. I support a moratorium on large residential subdivisions. We don't have the infrastructure in place to handle the residents we have now."

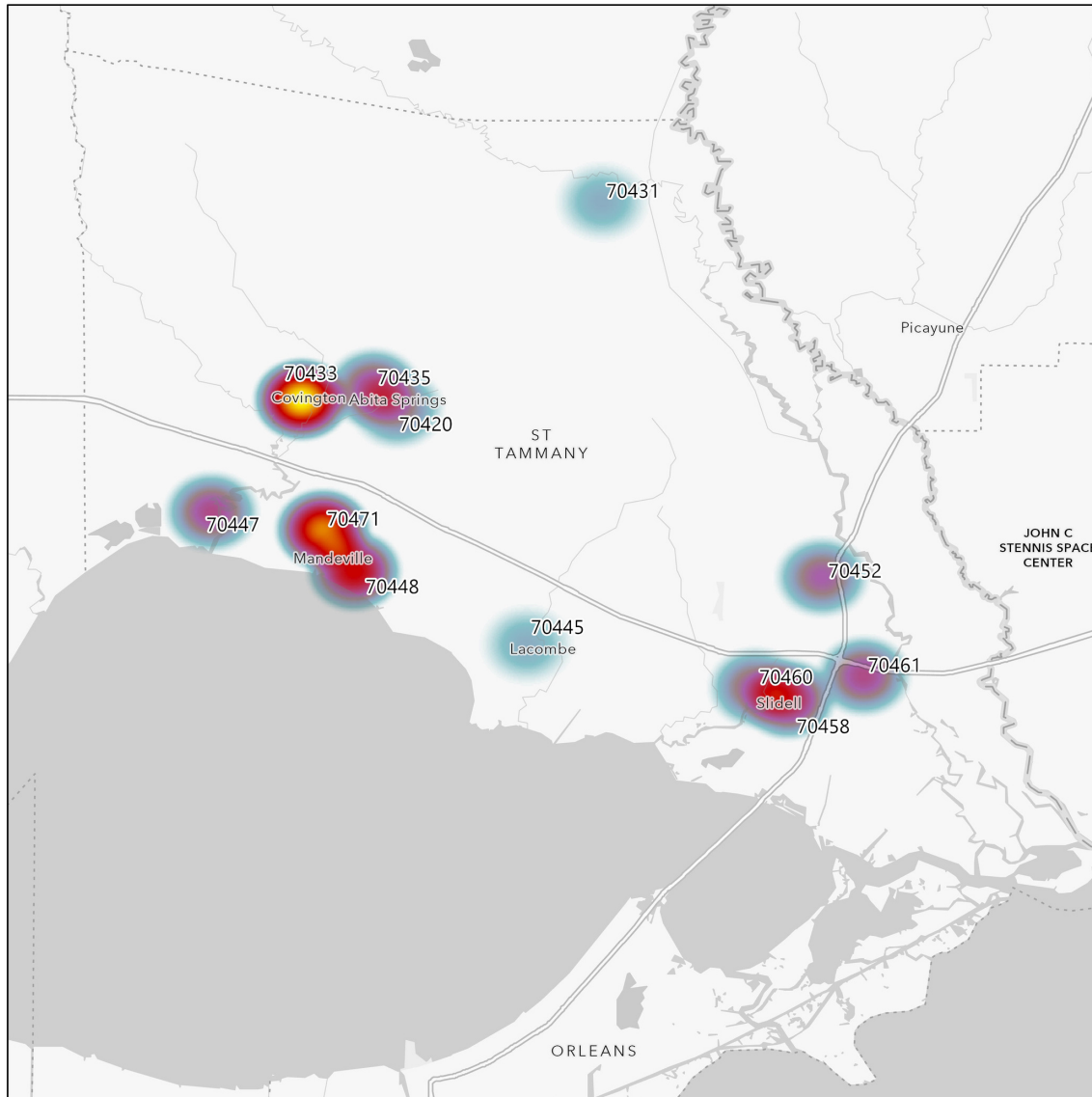
- **Improved transportation infrastructure.** Many respondents emphasized increased congestion on the roads, and the need to improve transportation infrastructure before building additional developments. In a question about types of infrastructure that require improvement, the majority of respondents marked "street & road improvements" over other infrastructure projects, such as bridges or stormwater management.
- **Mental health and substance abuse services.** Respondents mentioned housing for people in need of mental health and substance abuse services and ranked mental health services and services for those in crisis as the services needed most for residents of the Parish.
- **Effects of the Covid-19 Pandemic.** In a question about how the Covid-19 Pandemic affected residents, 31.8% of respondents reported harm to their physical or mental health or that of their family. 18.8% of respondents reported experiencing job loss during the pandemic.
- **Additional recreational options.** In survey questions about community and public facilities, St. Tammany residents marked youth centers and pedestrian walking paths as major priorities for additional recreational opportunities.

Where do respondents live?

Map 15 on page 57 shows a heat map of respondent zip codes. Responses were primarily submitted from incorporated areas of the Parish, such as Slidell and Covington. For future outreach, attention should be paid to increasing input from rural areas of the Parish, particularly to the north.

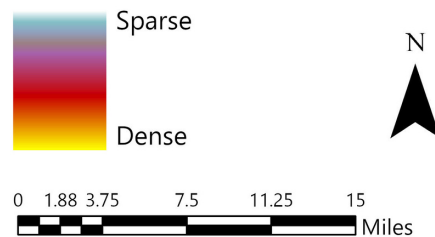
All survey responses are included after Map 15, as well as a copy of the one-page informational flyer distributed at events.





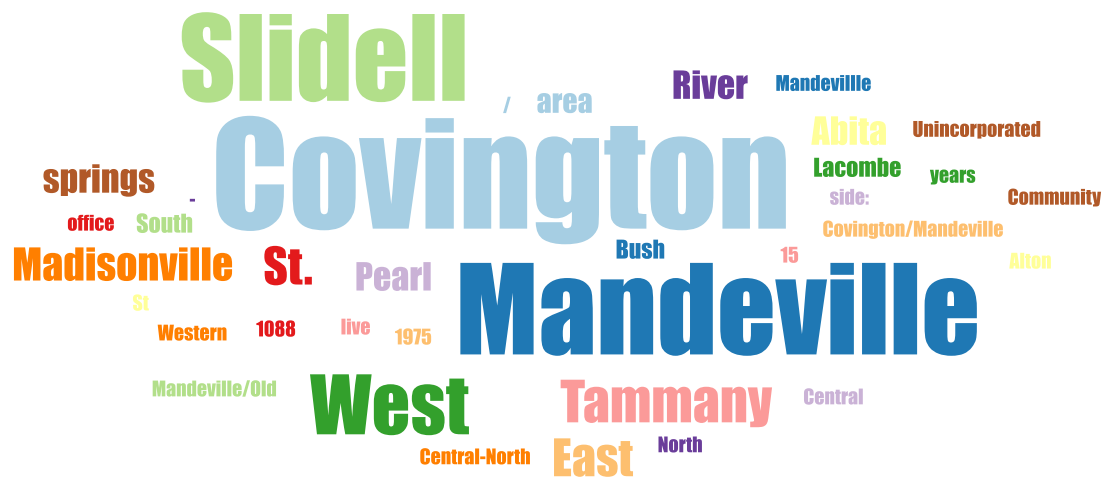
Heat Map of Survey Responses to DHHS Community Needs Assessment Survey

February - March 2023



St. Tammany Parish Community Needs Assessment

Inner-Parish Location



Response

Count

Response	Count
Slidell	15
Covington	15
Mandeville	12
West	4
West St. Tammany	3
Pearl River	3
Madisonville	3
East	3
East St. Tammany	2
Bush	2

All	2
Abita Springs	2
Western side: Madisonville, Covington, Mandeville	1
West St. Tammany - Abita Springs, Covington, Mandeville	1
West St Tammany	1
West Slidell	1
Unincorporated Covington	1
South West	1
South East	1
Pearl River / Slidell	1
Old Mandeville	1
Mandeville	1
Mandeville/Old Mandeville area	1
Mandeville, Covington	1
Madisonville for 15 years and Covington since 1975	1
Lacombe area	1
Lacombe	1
Just Outside Abita springs	1
I live off 1088 in Mandeville, but my office is in Covington	1
Covington/Mandeville	1
Covington area	1
Central-North	1
Central North	1

Alton Community	1
All of it	1

Answered: 89 Skipped: 1

What are ways St. Tammany Parish can better address housing and community...



Response	Count
<p>When emergency funds are available for Rental assistance do not make it depended on landlord signing an agreement that they will accept. Instead, Maybe sent a letter of payment verification for those who are approved to the landlord. Better address ditches full of that need to be cleaned and parish works in a timely manner. Madisonville is increasing the development along HWY 22. please install a 3 way stop at hwy 22 and hwy 1085 too many accidents and its hard to cross the street. In the city of Madisonville I have to have a long time for police response even though there is a station down the street from me. Because my house is in STPD area and the Madisonville police only protect residents along the river. I will pay taxes for a faster response time. The Hwy 21 station does not serve the whole city of Madisonville. Provide this survey in other languages</p>	1
<p>We need more affordable housing, especially mid-range apartment rental. It's almost impossible for a young, newly employed adult to find an reasonably priced apartment to rent.</p>	1
<p>We need help with the recreational department. There is absolutely no funding for it. This is a great need in our area. Children in this area are mostly below the poverty line. Our school is a title 1 school that receives extra funding but the rec center receives no funding</p>	1

<p>We have seen a dramatic increase in homeless individuals. More specifically, homeless individuals who are living with mental illness and/or substance use disorders. We are in need of multiple levels of housing, including but limited to short term shelters, long term supported housing for people living with mental illness. There is a need for some level of public transportation.</p>	1
<p>we have an increase of homeless population (Families with children) due to the lack of affordable housing, transportation and the failure to increase minimum wage to keep up the increase of cost of living.</p>	1
<p>Use some of the empty buildings to make more housing or bring life to other areas of the parish.</p>	1
<p>There seems to me there is a vast disparity in income levels in our parish, which is unfortunately mirrored in the target groups for service improvements. The group with the most wealth get a large of attention and consideration from our parish government. The lowest income range group also gets subsidies toward food, and, sadly, healthcare. that leaves a smaller demographic that are left with not much room at the table at all. We are accountable for ourselves, and struggling to maintain our level of survival. The very wealthy are rewarded with attention and consideration when it comes to their neighborhoods are first to get needed repairs, are given the benefit of the doubt in some situations, etc. The lowest income group is given free medical care, free money for food, etc., with no real belief or incentive to change that. Those of us in the middle make too much money for any assistance, and also do not rank high enough to be considered important.</p>	1
<p>There needs to be more funding to assist lower income individuals and homeless individuals.</p>	1
<p>There are several subdivisions being built but hardly any affordable rentals. Need more moderate-income rental properties available.</p>	1
<p>The traffic is choking the quality of life. I feel like I live in Metairie with fewer and fewer trees.</p>	1
<p>The roadways must be able to accommodate the increase traffic BEFORE another subdivision is built (especially off Highway 22). If there were sidewalks along hwy 22, more people could ride a bike or walk to somewhere. There are beautiful sidewalks on the west approach, but not on Hwy 22 or Hwy 59. I see kids walking through weeds on Hwy 59 trying to get to school.</p>	1
<p>The parish needs to embrace manufactured housing. Not run down trailers. But, quality new manufactured homes.</p>	1
<p>the homelessness, the low paying jobs, the housing crisis</p>	1
<p>The homeless are living in the parking lot near IHop. That is disturbing to me. Nobody wants to go to New Orleans in order to get services.</p>	1

The greatest challenge facing most people will be the insurance crisis. Insurance rates have increased substantially for many in the past year and it's going to continue to increase in the next several years. Many houses in will be unaffordable to insure for typical residents.	1
Strict zoning laws and more protection for our wetlands. More trees, less concrete.	1
Stop it all together	1
Stop development until there are unsought roads, better drainage, and clean drinking water.	1
Stop building houses and apartment complexes until the roads have been extended and traffic improves	1
Stop building apartment and condo complexes and update infrastructure to handle the population increase	1
Stop allowing zoning to allow for mobile homes in the same area as single family homes. Perhaps change zoning and make mobiles move to a designated area zoned for mobiles. Having raunchy mobile homes next to or across the street from nice regular homes brings down the property value of anything around the mobile. That's not right and not fair. Also, the mobiles are a blight. Also, when fixing a sinking drain like the ones on my street; fix them right, instead of them sinking again as soon as the work is done.	1
Stop allowing apartment buildings and housing for the masses since there is no infrastructure to support it.	1
Start building more expensive homes on bigger plots of land and stop building cookie cutter subdivision homes and apartment complexes. No homeless shelters or Section 8 either. If you build trashy housing, trashy people will move in. St. Tammany residents don't want trash and crime from New Orleans moving in here. Let the poor, trashy, homeless, and criminals go live in New Orleans. If you focus on building nice, expensive homes, nice, wealthy people will live here.	1
St. Tammany needs more affordable housing for people who are struggling to make ends meet.	1
St. Tammany needs a temporary homeless facility, also public transportation.	1
St Tammany needs a Homeless shelter for our Parish	1
Sidewalks	1
Rezone the Hwy 59 corridor coming into Abita to Commercial and LIGHT Industrial. Safer sidewalks along major Highways. Traffic Circle at Harrison Ave within the next two years for completion. Programs to help clean up blighted houses for poor/low income owners.	1

Rewrite the building code to make developers directly responsible for the impacts their developments have on drainage and traffic. They should have to accommodate the increased traffic by installing improvements to existing roads (much like the State did for the subdivision on 190 across from Brier Lake and the development on 59 by Koop)	1
Restrictions on multiple "non-related " groups living in one house.	1
Resources and help	1
Reduce zoning restrictions	1
Public transportation, biking/walking lanes on important thoroughfares	1
Providing more affordable housing to it's lower income residents Housing is too expensive here	1
Provide funding opportunities for individuals to buy and revitalize older properties in our communities that need help.	1
Provide affordable housing for single parent households and retirees. Not everyone can afford a \$350,000 house. Anything under \$200,000 is located in crime ridden areas. You are pricing families out of Mandeville and the school system that is offered here. You're forcing us to move to other areas where the schools are not as good and our children get a lesser education.	1
Provide actual affordable housing. \$1100 rent is not affordable. New homes are starting at \$230,00+. This is not affordable for most people, especially those on single incomes. Also, increasing programs to revitalize old neighborhoods and encourage purchasing in established neighborhoods and not building new homes into the marsh in a way that would encourage flooding in the future	1
Please stop building new, we do not have the needed infrastructure to support more people living here	1
Please plan infrastructure with population growth and flooding in mind. Please also consider traffic flow and access to an area from multiple points.	1
Please address social determinants of health - transportation, access to healthcare services, especially mental health services,	1
Not sure I have the expertise to answer this. I just know we need more affordable housing. As an employer, many of my staff come from Tangi, Washington and Hancock. They can't afford to live here.	1
N/A	1
Much more moderate to low income housing needed to be built in a way to mitigate flooding risk and density. Public transportation could be a part of that plan,	1

More resources for the homeless community are needed in the area such as non-congregational shelters, assisted living and vouchers for section 8. Also more assistance for rental and utilities assistances are needed in the area as well.	1
More multi - family affordable housing	1
More mixed use, with low-income choices. More senior centers in neighborhoods. Sidewalks for more walkable areas.	1
More diversity of housing. Mixed use. Senior living. Smaller homes on smaller lots for starter homes. More rental options.	1
More affordable single family homes	1
Make sure the roads can handle the changes.	1
Make sure the money goes where its supposed to, and don't waste money.	1
Make lot size minimums larger Make cycling a viable option with protected lanes and expand the track	1
Make home ownership attainable and affordable. Stop building "project" type housing and treat all homeowners as you wish to be treated. Stop building on every corner, thus eliminating green space. Have more nature spaces. Mitigate flooding issues with thought. Bring rental rates to a more sustainable level. Get rid of contractors that don't want to build a parish that works for everyone. We all have to make a living, but the constant building without forethought is making this parish feel like Metairie or worse, like Kenner. Visit other like areas around the world to see what they are doing differently for housing, or what innovations they are working with...it's time to think hard about our infrastructure in St. Tammany. This affects home ownership, rentals, etc. The parish council needs to listen more, fight less, and bring change for all residents of this parish—not just certain people or groups.	1
Limit development without infrastructure support being complete in advance.	1
Keep residential and commercial separated	1
Insurance rates are serious impediments.	1
Infrastructure	1
Increase education for young women and teen girls on future life results of becoming pregnant before able to fully support child emotionally and financially-importance of waiting until achieve education and can have a stable home. Education on ways to change the generational culture norm and cycle that is causing increased youth violence and family poverty	1

If they created subsidized housing apartment complexes for low income family's	1
housing for low income public transportation bridge issues in Madisonville and at Claiborne Hill	1
Having an emergency rental assistance program that helps people before they get evicted. Community Action is no help.	1
Have reps go to the neighborhoods and talk to the residents with the idea of understanding their point of view.	1
Hard to answer this without knowing what you're doing now to address these issues.	1
Get the community involved more. If the community are involved. They are more likely to buy in on things.	1
Funding for workforce and low - and moderate - income housing by becoming a Participating Jurisdiction for federal HOME funds.	1
Focus on climate change "proof" housing and land/flood management since hurricanes and other natural disaster are increasing in number and intensity.	1
Flooding control and Vet housing. Better drinking water management and production.	1
Everyone need to go in open minded and empathy for those who are less fortunate and also to those who are fortunate and come to a compromise.	1
Ensure better traffic control and use of public transit. The parish needs more lower-income, higher-density housing and the infrastructure that should accompany it. For example, Mandeville (near Beau C here entrance on Hwy 22) needs sidewalks to protect pedestrians and cyclists from heavy, aggressive traffic and the hazards of walking alongside the road. I see people walking on the side of Hwy 22 at all hours of the day and the need for sidewalks is beyond obvious.	1
Don't allow zoning to allows for small lots Make developers pay for infrastructure that works	1
Develop a long-term plan. Planning in the moment is generally reactionary. However, planning should be intentional and requires much more work and care n feeding.	1
Cost for Homeowners Insurance/Flood Insurance	1
Consolidate the process of identifying the issues, tabulating, reviewing and acting on them. Take an issue and move it forward in bite size pieces - getting everyone around a table all at once to support a bite size pilot program to move an issue forward. Stop trying to resolve all of the issue at once.	1

By reducing fees for new development properties in this low income neighborhood. Allow mobile homes with up to date standards or building codes. Everyone can't afford new builds but allowing additional options is fair.	1
By providing more income based and section 8 housing options. The Housing Authority in Covington does not provide more options to people or help guide them in the right direction when they are seeking affordable housing.	1
Bike paths, community garden, some type of public transportation	1
Better Roads Drainage Cheaper Housing	1
Better management of development. Plan for mixed use to include single family homes, smaller affordable housing, apartments close to shopping and transportation. I have never seen a plan that includes that type of development.	1
Better drainage and support for nonprofits owned facilities	1
Better bike infrastructure, more sidewalks and crosswalks	1
Any type of financial support for affordable housing of all types, multi- and single family, will be helpful	1
Affordable housing. The rent in this area, due to high property taxes, is obscenely out of control.	1
Affordable housing development - rents are too high	1
Address interest rates	1
??	1
- educating the public on how more affordable home ownership for local workers strengthens the community overall - funding/incentives for developers to include a reasonably small number of affordable units in modest developments - zoning to allow for duplexes, triplexes, and four-plexes for workforce home ownership - more truly affordable subsidized rentals	1

Answered: 85 Skipped: 5

In your opinion, what is the greatest challenge the people of St. Tammany Parish face i...



Response	Count
Traffic	2
Water- drainage, storm protection Transportation- as we grow there are more and more people who need public transportation Anti-tax voters- the small number of people who vote consistently do not want to invest in our parish's infrastructure or quality of life amenities	1
TRAFFIC. There are not enough parish roads!	1
Traffic. The area is still growing and you all have not kept up with it by way of our roads. Every day there are accidents, due to angry drivers being stuck in traffic for hours! It is ridiculous that it has taken this long, that it took a fatal car accident to finally spur anyone into action. Not enough round about ways outside of the interstate.	1
Traffic.	1
Traffic, lack of transportation, loss of community`	1
TRAFFIC! Also, the need for sidewalks.	1
TRAFFIC!	1
Traffic on the road from the increasing population Demand for Law Enforcement with the increasing population	1
Traffic issues for commuters.	1
Traffic due to lack of updated infrastructure	1

Traffic congestion Drainage Overbuilding	1
Traffic and flooding	1
Too much development, too fast. Traffic is a major issue. I support a moratorium on large residential subdivisions. We don't have the infrastructure in place to handle the residents we have now	1
The traffic situation. We could easily have a turning lane on 1077 @ Brewster Rd. Also, reduce the speed limit to 45 on Hwy 21 and 1077. The light @ Madisonville 22 was better as a four way stop. At least then the traffic moved along. Now it's stopped. We need more law enforcement and traffic citations to make people behave.	1
the roads are terrible, state roads included. The price of getting to work - insurances, gas prices, and general cost of living increases are pricing people out of working altogether.	1
The parish has grown faster than the infrastructure and there needs to be more to do for older teenagers/younger adults.	1
The less populated poorer areas get ignored in this parish.	1
The lack of public transportation. And I'm not talking about transportation like the old days where buses go into underserved communities. We need some sort of rail system and other innovations. The other great challenge is that more people behave like democrats or republicans than humans. They fail to work for all communities due to their politics. This parish needs to lead the effort for innovation. Parish staff is immense but the innovations are lacking. We love this parish, and many of our leaders—but we never really discuss how we can do better together. We certainly have lots of “reports” and “plans” generated by the current economic group, and lots of awards for those items. The parish produces the same type of paper. But where is the delivery of innovation? Where is the Trace that supposed to connect to Slidell—that is an innovation supposed to be provided by the parish. It's this lack of innovative delivery that makes people question our leadership.	1
The influx of refugees from the south shore	1
Taxes, insurance, affordable housing, housing for the homeless.	1
STREET DRAINAGE AND UNCHECKED CONSTRUCTION AND STREET WIDENING .	1
Staying afloat in this God awful economy.	1
So many challenges. Leadership needs to focus on ALL residents, not just those who are in their ears constantly. Those who need help the most don't necessarily have a voice. Rising tide lifts all boats.	1
roads, housing, homeless	1

Rising gas and grocery prices.	1
Public Transportation -	1
Preservation of our current lifestyle. If you continue to allow high density developments that butcher our forests, we will be living in Metairie in 10 years.	1
Poverty continuing to rise and people experiencing homelessness have no where to go in the Parish. A homeless shelter could provide many people experiencing homelessness a place to go.	1
Population	1
Overflowing high schools, flooding, and traffic.	1
Overdevelopment	1
Overcoming past hurts and healing.	1
Over population and costs to live here	1
Over population	1
Over development/too much residential development, especially in areas prone to flooding.	1
Over development	1
over building of housing while not increasing roads/bridges	1
Our infrastructure does not support the overload on our roads and schools from our parish expanding to the west, and affordable housing is hard to come by. The NIMBY attitude is unbelievably out of touch with the reality of our growing parish. This mindset will continue to hinder our growth and progress as our population increases as people move here from the south shore.	1
Non-existent infrastructure & representation of the citizens.	1
Non car transportation I.e buses, streetcar, pedestrian, cycling access	1
no access to affordable housing or higher paying jobs	1
N/A	1
More traffic Too many subdivisions with no low income housing Too much zoning for big business Lack of public transportation	1

Managing our robust growth. All infrastructure components are placed under pressure in a high growth situation, and that appears likely to continue for some time. The notable absence of any form of public transport will become more significantly felt by our lower-income families as we grow.	1
Limitations due to increase cost of living Increased break down of the family due to drug addiction, incarceration, lack of fathers in the home, single mothers, teen mothers, lack of education for young women and teen girls on future life results of becoming pregnant before able to fully support child emotionally and financially-importance of waiting until achieve education and can have a stable home. Connecting residents and making them aware of community resources-need more health ministers and trained community liaisons in local churches. Need volunteer and trained neighborhood community health workers to connect their friends, family and neighbors to available community resources	1
Lack of workforce housing to support existing businesses and future growth. Many, if not most, of the low- and moderate-income jobs are staffed by individuals living in other parishes with less expensive housing options or in local substandard housing conditions.	1
Lack of public Transportation Underfunded and over crowded under staffed public school Madisonville needs its own public high school housing/rent affordability (crack down on landlords that are charging high rent for substandard living conditions) underage drinking: its overwhelming how many teenagers are openly drinking every single weekend.. on the boats, parks, and in neighborhood. Charge parents too and discourage openly drinking. Affordable youth programs, too much youth recreation is privatized.	1
Lack of infrastructure	1
It's getting more and more expensive to live in St. Tammany. Also, there is not enough affordable housing. There is no public transportation which is a long standing problem. Traffic is getting worse as there seems to be little to no planning for the increase in the population which seems to be happening rapidly, especially after hurricanes devastate nearby communities. Could also use new businesses/jobs in Slidell. Not a casino or a prison complex. There doesn't seem to be much creativity in terms of bringing new industry here. Only project that will discourage people from living here. We have vacant spaces in Slidell that need to be repurposed. Stop giving gracious benefits to companies that are not invested in Slidell doing well that leave our building empty and make it hard for other companies to move in or for those spaces to be repurposed	1
Insurance will be a major concern for everyone in St. Tammany Parish. We must find a way to lessen the burden for our citizens.	1
Insurance coverage, affordable housing, and drainage.	1
Infrastructure	1

Inflation and the rise of taxes.	1
Increased rent prices.	1
Increased division among political views, race relations, and people of differing socio-economic statuses. These divisions will lead to more violence and crime.	1
Inadequate Infrastructure to support the current growth and population of the parish	1
I think the infrastructure projects that are green-lit prematurely and, as often as not, extend far beyond a reasonable inconvenience to the citizens, I-12 is a nightmare, along with the enormous number of traffic signals on Hwy 190 in Covington. Importantly, the Pier repair does not look probable.	1
I don't know	1
Housing cost	1
Homeowners Insurance increasing and not being able to afford it. Foreclosures will increase.	1
Higher Density home development	1
For the past few years I've seen St Tammany face problems with the housing development. No affordable housing in the area non resources to assist with affordable housing. Homeless are sent to other parishes for assistance rather than being linked to services in the community. Linking of all the community resources in the area in a full stream network has not been established. And hurricane recovery program established before and during a hurricane.	1
Flooding, over priced housing	1
Flooding, excessive traffic, and over crowdedness caused by overdevelopment of land and lack of upgrades/expansions to roads.	1
Flooding due to over development	1
Fixing traffic issues! Maintaining a quality community.	1
Employment - Homelessness - Mental Health needs	1
Drinking water and VA Housing	1
Drainage challenges and patience taxing traffic. What used to take 15 minutes to travel now takes 30 to 45 minutes or longer.	1
Diverse affordable housing. Transportation and Mobility around the parish. Safe roads for pedestrians and motorists.	1

Democrats and their policies which ruin countries, communities, and families. Seriously, if you want to fix things - make sure the right conservatives are in leadership. People will struggle a lot less if their lives were not controlled by people who purpose to make life harder on them (Dems).	1
Damage caused by over the land flooding	1
Crime will be the biggest challenge. Our community needs to provide those incarcerated with the tools to enter back in society with a skill.	1
Crime	1
Cost of living gas	1
Cost of food	1
Child care accessibility and affordability Cost of daily living	1
Being able to keep up with the cost of living. Affordable housing and rentals is continuously rising but income remains the same.	1
affordable workforce housing, traffic conditions, homeowners insurance costs	1
Affordable Housing and quality services for children and older adults	1
Affordable housing and Homelessness	1
Affordable housing - no longer an issue just for the homeless - but for the middle class. Promote shared living solutions, like roommates/shared living housing (rent a room like many half way houses promote). Pilot a tiny home complex on Safe Haven's campus.	1
1. Lack of infrastructure to support growing population. 2. Escalating mental health and substance use disorders. 3. Continuing to address crime concerns, gun safety, safe housing options. 4. Is education infrastructure equipped to handle impacts from COVID disruption? 5. Resources to support St Tammany Parish youth (education, sports, social)	1
?	1

Answered: 86 Skipped: 4

In your opinion, what is the greatest strength that the government of St. Tammany Pari...

St Tammany Parish is a wonderful place to live, and I believe government officials are aligned in making sure this region continues to prosper. Having strong and accessible resources such as law enforcement, an effective judicial system, education system, physical and mental health care services, is mission critical.	1
St Tammany is great with getting government funding to assist in some areas to assist with housing	1
Some community involvement, but more is needed in certain populations.	1
Sense of community.	1
Schools.	1
Safety. Though we see crime increasing in certain areas, our parish (and each city/township) works very hard to keep us safe. We have excellent law enforcement throughout the parish. The same with fire protection. It's stellar.	1
Safety compared to other areas in the state.	1
Safety and public services such recreation. The Tammany Trace and public parks are a wonderful resource. The amount of green space is why I moved here.	1
Safety and education	1
Resources necessary to create a sustainable future that supports the needs of the citizens and manages smart growth/development	1
Relatively low crime.	1
Relatively easy accessibility to parish employees. Willingness to work with non-profits to facilitate services to the low- and moderate - income segment of the population where market solutions are not available.	1
Quality policing.	1
public safety and low crime rates.	1
Public safety	1
Providing services in town	1
Police12	1
Police Departments seem strong in St Tammany & Economic Development is strong and growing.	1

Parish Government has done a great job working with social service community partners to create Safe Haven. This is an entire behavioral health campus, aimed at filling the enormous gaps in the healthcare system. There is need to continued investment and potentially a stronger focus on housing and transporting individuals in financial need. They are also involved in other initiatives to assist lower-income individuals to living a healthier lifestyle, increasing quality of life.	1
Overall safety in the community.	1
Outstanding customer service and online access to many services.	1
Our police department	1
Nothing, they provide high taxes	1
not sure	1
None	1
Natural beauty and resources	1
Natur4	1
Mosquito Abatement maybe.	1
More than Kevin Davis or Patricia Brister, I honestly feel that Mike Cooper cares about citizens concerns and is proactive about addressing them. It's blatantly obvious that he is meeting strong opposition from Parish Council who, in my opinion, anyone who has warmed a seat for more than 4 years should be replaced. I'm extremely disappointed by some of the immature, unprofessional displays of pique by the more established members. The newer members come across as intimidated or cautious when the more experienced members act out	1
Maintenance.	1
lots of green space and nature preserves. no industrial refineries near by.	1
LIHEAP assistance, CSBG rental assistance, and also the STRAP program.	1
Law Enforcement	1
It's Stability	1
It's Council members	1
I think STPG has lost most of it's public approval. Too much in fighting between Council and President. I'm not sure the government has a greatest strength at this time.	1

I suppose to be our advocate at the state and federal levels.	1
I believe the current presidents office is in it for the right reasons. Not sure about the council.	1
Great school system	1
Grateful for the first responders.	1
Good fiscal policy	1
Good "quality of life" departments- health department, library, animal control	1
For the most part, we offer safe communities with good educational systems. The structure is in place for all residents to access education and career opportunities. Individuals must also meet the system half-way and pursue those opportunities.	1
Fixing the roads will make life easier but it should have been done ten years ago	1
Fire protection	1
Excellent basic services and government that works	1
Education, Community Resources	1
Education system, strong tax base. Desire to live in Christian community.	1
Decent public schools	1
Community Resources and Support Systems Ability to work together for a common good and goal Ca ring people Health and Human Services Department	1
Community Action is a great program when they have funds.	1
Cohesiveness, responsivity	1
cleanliness, community building events, good police that are well trained.	1
Being a beautiful, mostly crime-free place to live and raise a family safely. The St. Tammany Parish G overnment needs to do more to protect St. Tammany and ensure it continues to be a nice place to live before Covington/Mandeville turns into Metairie/Kenner.	1
Availability. They make themselves available to help	1
All I see them do is approve more subdivisions, dollar stores, and storage units.	1

all areas of the parish are represented.	1
After storm recovery	1
A safe place to raise children and hood schools.	1
A safe community and good public schools	1
A safe community	1
???	1
? I assume they take a lot of bribes from developers	1
?	1

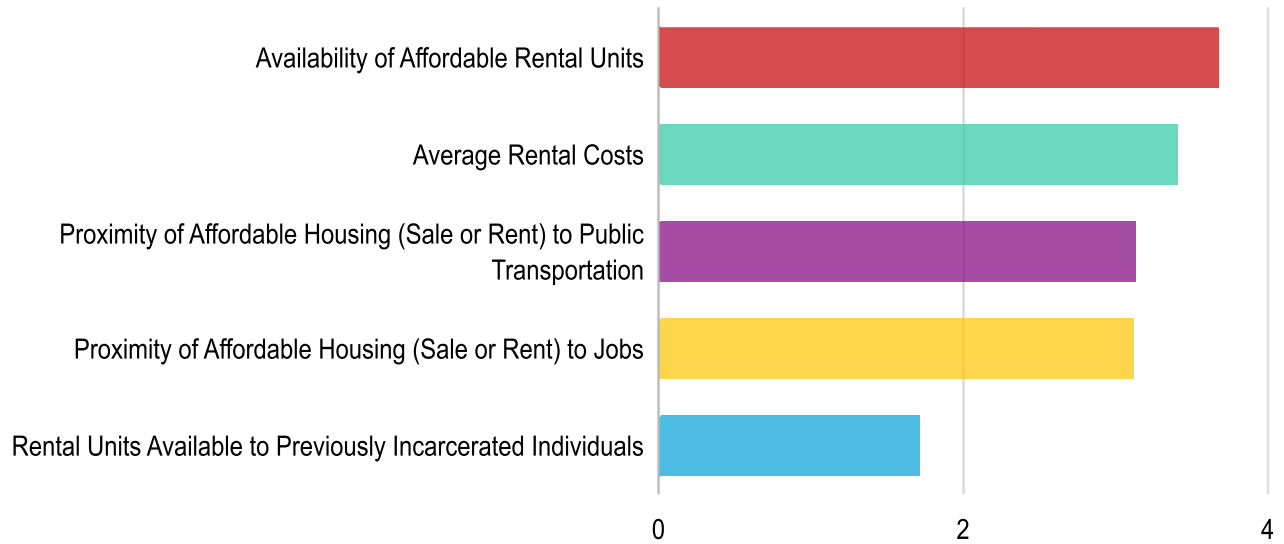
Answered: 74 Skipped: 16

Please rank the need for the following HOUSING development in St. Tammany...

5	Lack of Sewer System	3.66%	12.2%	17.07%	17.07%	15.85%	20.1%	3.30
		3	10	14	14	13	13	

Answered: 82 Skipped: 8

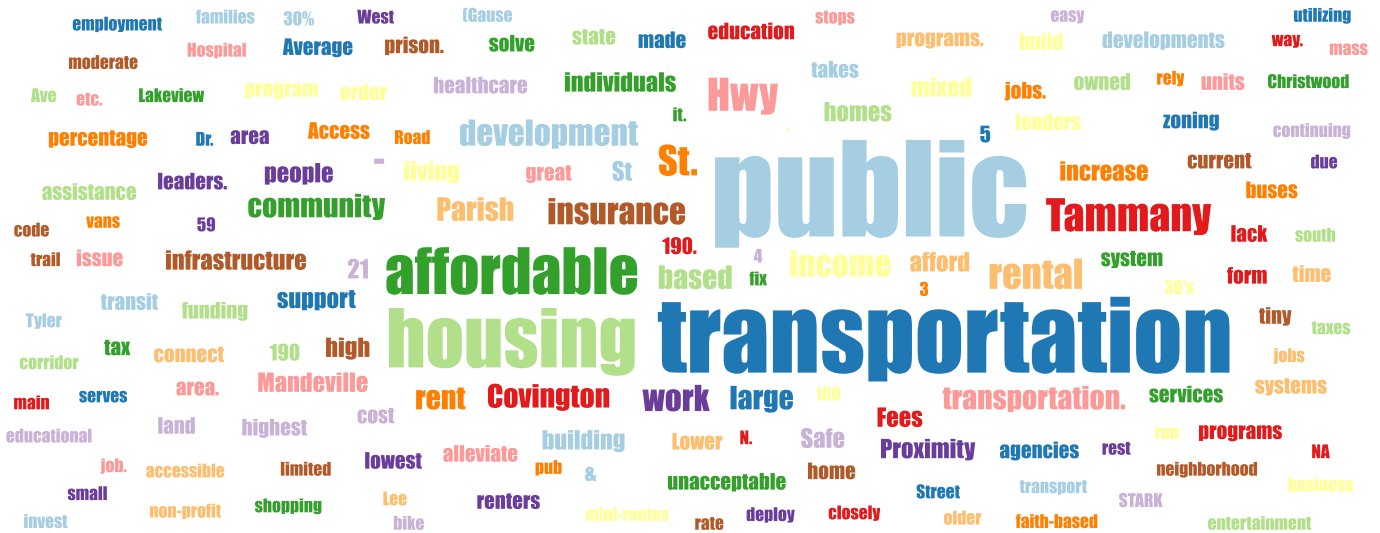
Please rank the following act as barriers to housing in St. Tammany Parish:



Rank	Answers	1	2	3	4	Average score	
1	Availability of Affordable Rental Units	29.63%	29.63%	23.46%	12.35%	3.67	4.94%
		24	24	19	10		4
2	Average Rental Costs	23.46%	28.4%	20.99%	18.52%	3.40	
		19	23	17	15		
3	Proximity of Affordable Housing (Sale or Rent) to Public Transportation	20.99%	18.52%	22.22%	28.4%	3.12	9.88%
		17	15	18	23		8
4	Proximity of Affordable Housing (Sale or Rent) to Jobs	19.75%	20.99%	22.22%	24.69%	3.11	
		16	17	18	20		
5	Rental Units Available to Previously Incarcerated Individuals	6.17%	2.47%	11.11%	16.05%	1.70	64.2%
		5	2	9	13		52

Answered: 81 Skipped: 9

For any of the Barriers you selected above, please describe barrier and suggestions fo...



Response **Count**

<p>Work on a limited public transport system that serves the Hwy 190 corridor from Lakeview Hospital to N. Lee Road, continuing through the West 30's neighborhood and Tyler Street to Hwy 21 south to Christwood, with stops along the way. The accessible vans used by STARK would be great to also deploy to two mini-routes like Hwy 21 and Hwy 190. Lower and moderate income families and others would have access to employment, entertainment, shopping, healthcare, etc.</p>	1
<p>Work more closely with non-profit, faith-based, educational, healthcare, small and large business, and housing leaders. Schedule roundtables where these leaders can "lead" conversations rather than be spoken to by current government and economic leaders. There's great value in listening to other's voices. It takes work, and targeted outreach methods. Otherwise, this very survey will become simply another piece of the ongoing paper trail of reports and plans.</p>	1
<p>We need to invest additional dollars to housing for people living with mental illness. There are qualified agencies and evidence based models that can be applied. As noted we are in severe need of a public transportation option. While our community may not be able to sustain a large public transportation movement, utilizing public funding for already existing social services agencies with the capacity for transportation, we can alleviate the high need.</p>	1
<p>We need some form on public transportation. There isn't any form of public transportation in St Tammany to connect low-income workers to jobs. Given the high insurance rates, high taxes, and overall cost of living in this area, public transportation must be addressed; however no one seems to support or has taken action to address it.</p>	1

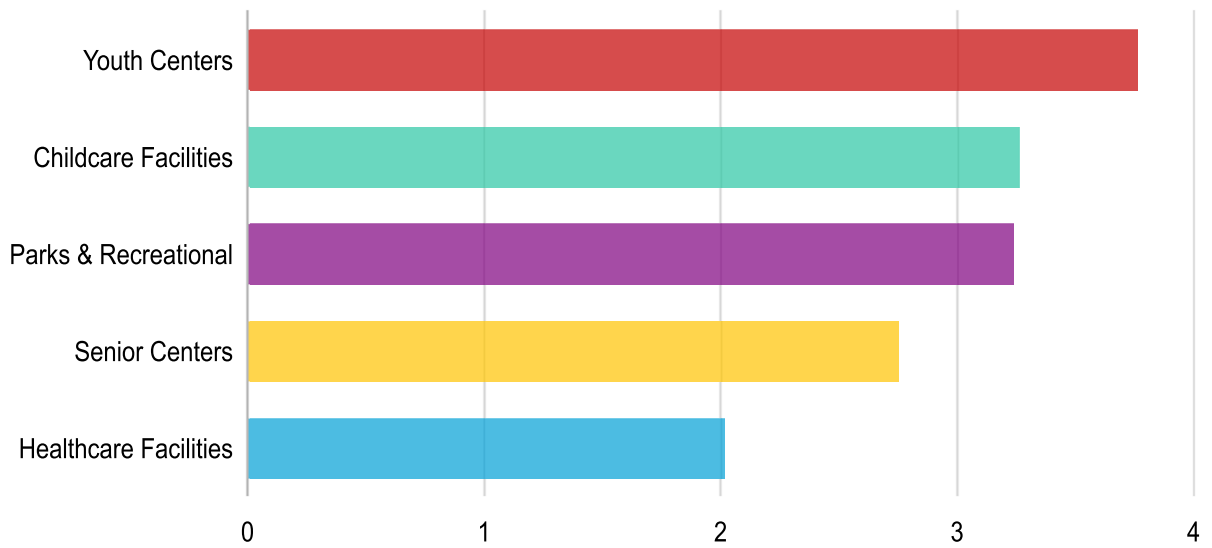
We need more options for mass public transportation, especially along main highways like 190.	1
We need less rental properties	1
We do t need more affordable housing	1
We are becoming an older community. When our children have moved out, there is not much of a selection of smaller homes that are affordable enough in order for someone to make is accommodating f or senior needs.	1
Tiny homes?	1
There is no regular public transportation in St. Tammany. STAR transit information is not widely known, and there should be more public awareness made of this service. Rising insurance costs!!! This must be addressed on a state level. We need to elect a new state insurance commissioner who is going to work for better and more affordable insurance for all citizens!	1
There is no public transportation to speak of, which is an unacceptable oversight and, frankly, something we should be embarrassed by as a relatively affluent area. The lack of affordable housing and public transportation systems speaks to how the St. Tammany community and leaders frown upon individuals who would rely on these systems for everyday transportation and affordable living. I would love to see public buses, more sidewalks, and more bike paths that connect the western edge of Mandeville to Covington and the rest of our community that allows pedestrians and cyclists (often children!) to travel safely and have reliable transportation to their jobs.	1
St. Tammany needs some type of public transportation.	1
St. Tammany has some of the highest permit fees in the area for building. This causes developers to raise their price and pass it onto the consumer. Lower the development fees and more of us would be able to afford housing.	1
St . Tammany has the highest conviction rate but lowest in rehabilitation services for incarcerated individuals. Rebuild the work release program to support individuals getting out of prison. Parolees can't live with felons. Where are they supposed to go? Develop a re-entry program that includes housing specifically for those getting out of prison. Rentals are unaffordable based on the AMI for this area.	1
Something need to be done on a greater scale to increase income levels in order for individuals to be able to afford the increase in rental homes and mortgages.	1
Public transportation in Slidell, Mandeville & Covington along the major corridors (Gause Blvd, Pontchartrain Dr., Front St in Slidell. Florida Ave & Hwy 59 in Mandeville/Abita and Hwy 190, Collins, Hwy 21 in Covington	1

Public Transportation and safe lanes for alternative transportation like biking and walking.	1
Proximity to public transportation - St. Tammany doesn't have public transportation which needs to be addressed.	1
Proximity of affordable housing to public transportation. We don't HAVE ANY public transportation.	1
Proximity of Affordable Housing to Public Transportation - there is no public transportation to which to be proximate.	1
people can't afford to fix their cars or don't have cars. Public buses would be helpful.	1
Not my job.	1
NA	1
N/A	1
More mixed use development. More diverse housing options. More infill development that uses current infrastructure instead of adding new subdivisions that require all new infrastructure and sprawl	1
More jobs in the Parish would help but I don't know how to control the exorbitant rental prices.	1
More affordable rent	1
Loosen zoning to encourage higher density affordable housing and public transit	1
It is unacceptable for Homeowners insurance to double in Louisiana. So they have to actually pay out pretty well after a natural disaster. How much profit do they need to make? They are all owned by a few mother companies anyhow, so let's stop playing games and solve this issue of premium gouging.	1
Investment into affordable housing development that takes into account the lack of public transportation	1
I see nothing regarding education and helping with job placement or development of skills. Tie this housing into education requirement that is also made available through parish programs.	1
I realize that our parish has a large percentage of unincorporated land, but I have ALWAYS questioned why a viable and safe public transportation system has never really been a priority at least the more populated communities here (Slidell, Covington, Mandeville, Hammond).	1
I don't think any of them are a problem. I want as few renters and criminals living in St. Tammany as possible.	1
Find ways to build affordable homes	1

Don't try and solve whole issue at once. For housing - support a tiny home community on Parish owned land - like Safe Haven campus (can be replicated when successful to shelters and potentially to large employer complexes.	1
Don't have any	1
Dont go after the people that need help tge most because they are easy targets	1
Design/build roads to alleviate congestion.	1
Building more mixed use developments	1
Bring in development contractors with experience in building mixed income housing	1
Better bike/walk infrastructure	1
Average Rental Fees - put a cap on Rent or prevent drastic increases due to economy	1
Assistance with rent or home buyer's programs.	1
Affordability - rent subsidies, increase supply.	1
Access to power, water and sewage lines.	1
A true subsidized building for those in the lowest tax bracket. Some of these new developments might have 5 units out of 100 that are for rental assistance, but they are still getting the tax benefits.	1
A bussing system.	1
1&2 At least public shuttles like COAST has that run only along hwys. At a fare. 3 Average rental cost, legislation/ code enforcement/ zoning When apartment complexes over a certain number of units are build a percentage is designated to Income based housing not exceeding 30% of the renters income. 4 more funding for transitional housing and prison reentry programs 5 provide upward mobility programs from income based renting to first time homebuying given a defined time period.	1
?	1

Answered: 49 Skipped: 41

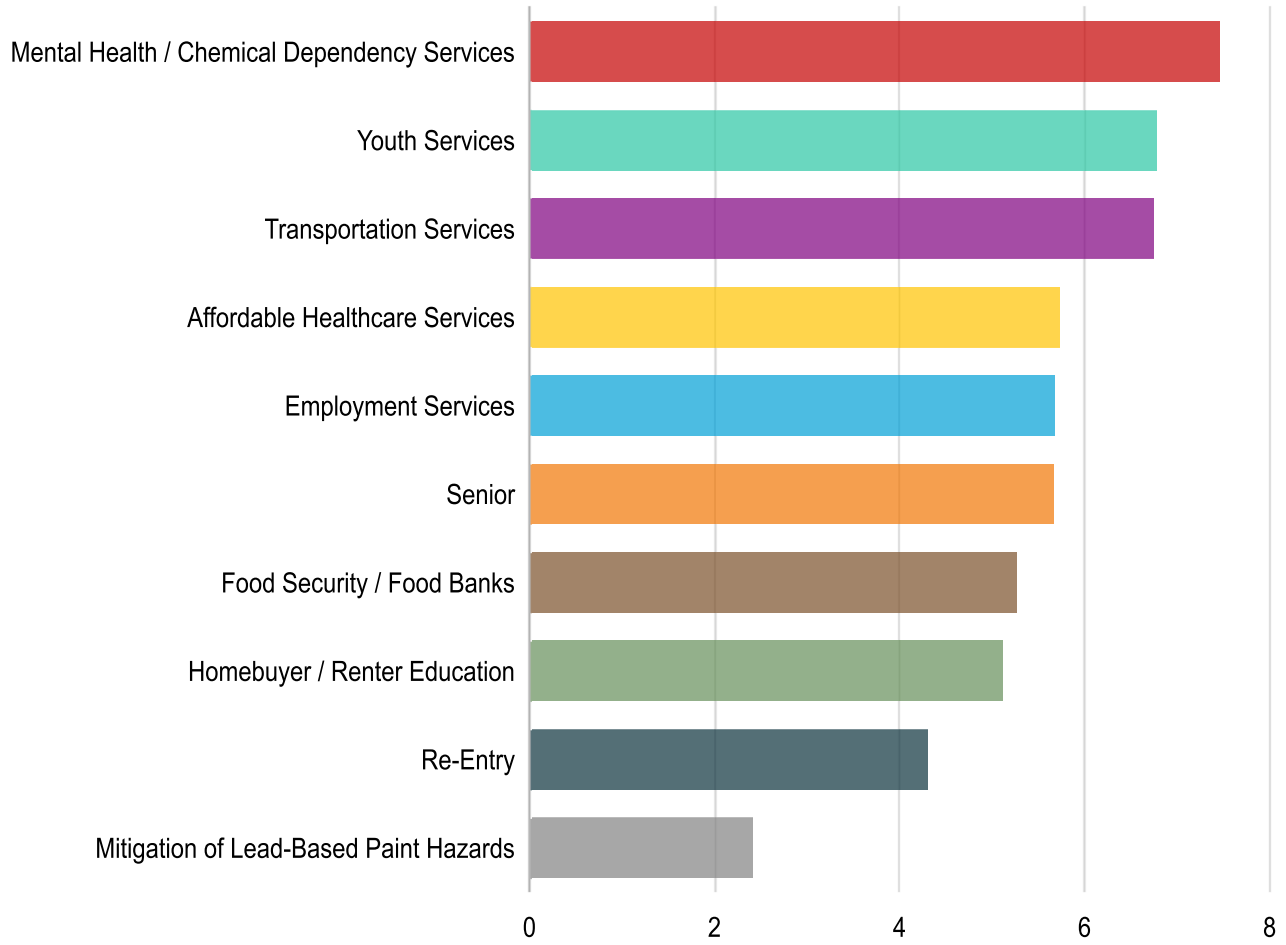
Please rank the need for the following COMMUNITY & PUBLIC FACILITIES in th...



Rank	Answers	1	2	3	4	Average score	
1	Youth Centers	43.02%	18.6%	18.6%	10.47%	3.76	9.3%
		37	16	16	9		8
2	Childcare Facilities	16.28%	31.4%	24.42%	17.44%	3.26	
		14	27	21	15		
3	Parks & Recreational Centers	25.58%	17.44%	23.26%	22.09%	3.23	11.63%
		22	15	20	19		10
4	Senior Centers	9.3%	23.26%	20.93%	25.58%	2.74	
		8	20	18	22		
5	Healthcare Facilities	5.81%	9.3%	12.79%	24.42%	2.01	47.67%
		5	8	11	21		41

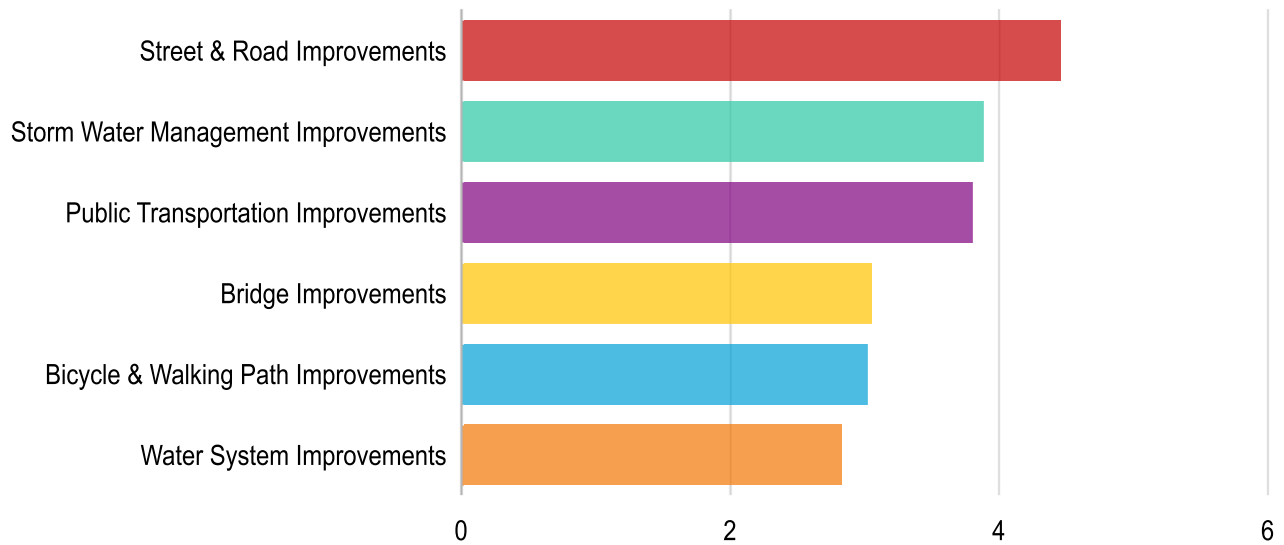
Answered: 86 Skipped: 4

Please rate the need for the following HUMAN & PUBLIC SERVICES in St....



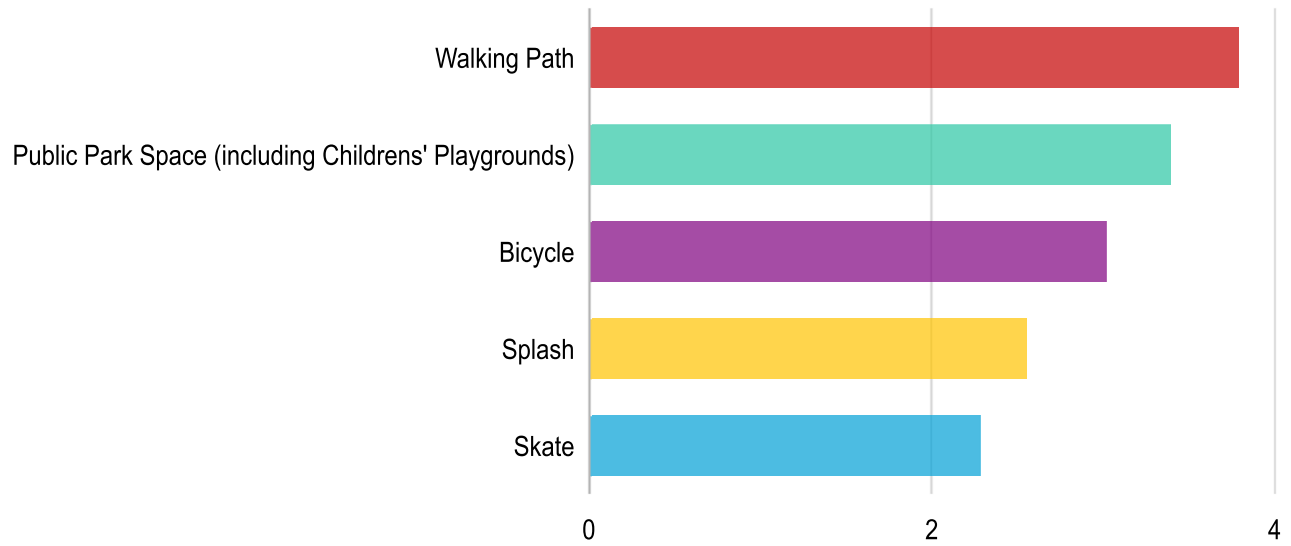
Rank	Answers	1	2	3	4	5	Average score	
1	Mental Health / Chemical Dependency Services	28.92%	19.28%	12.05%	6.02%	12.05%	3.61%	9.64%
		24	16	10	5	10	3	8
2	Youth Services	9.64%	20.48%	16.87%	13.25%	14.46%	6.02%	6.76
		8	17	14	11	12		
3	Transportation Services	27.71%	8.43%	8.43%	13.25%	8.43%	9.64%	2.41%
		23	7	7	11	7	8	2
4	Affordable Healthcare Services	7.23%	10.84%	12.05%	15.66%	9.64%	8.43%	5.71
		6	9	10	13	8		
5	Employment Services	7.23%	9.64%	10.84%	14.46%	6.02%	15.66%	15.66%
		6	8	9	12	5	13	13
6	Senior Services	6.02%	7.23%	15.66%	9.64%	14.46%	12.05%	12.05%
		5	6	13	8	12	10	10

Please rank the need for the INFRASTRUCTURE activities in St. Tammany...



Rank	Answers	1	2	3	4	Average score	
1	Street & Road Improvements	34.83% 31	21.35% 19	16.85% 15	14.61% 13	5.62% 5	6.74% 6
2	Storm Water Management Improvements	16.85% 15	15.73% 14	33.71% 30	12.36% 11	14.61%	3.88
3	Public Transportation Improvements	25.84% 23	21.35% 19	7.87% 7	12.36% 11	16.85% 15	15.73% 14
4	Bridge Improvements	3.37% 3	16.85% 15	16.85% 15	21.35% 19	26.97%	3.04
5	Bicycle & Walking Path Improvements	12.36% 11	10.11% 9	15.73% 14	20.22% 18	11.24% 10	30.34% 27
6	Water System Improvements	6.74% 6	14.61% 13	8.99% 8	19.1% 17	24.72%	2.82

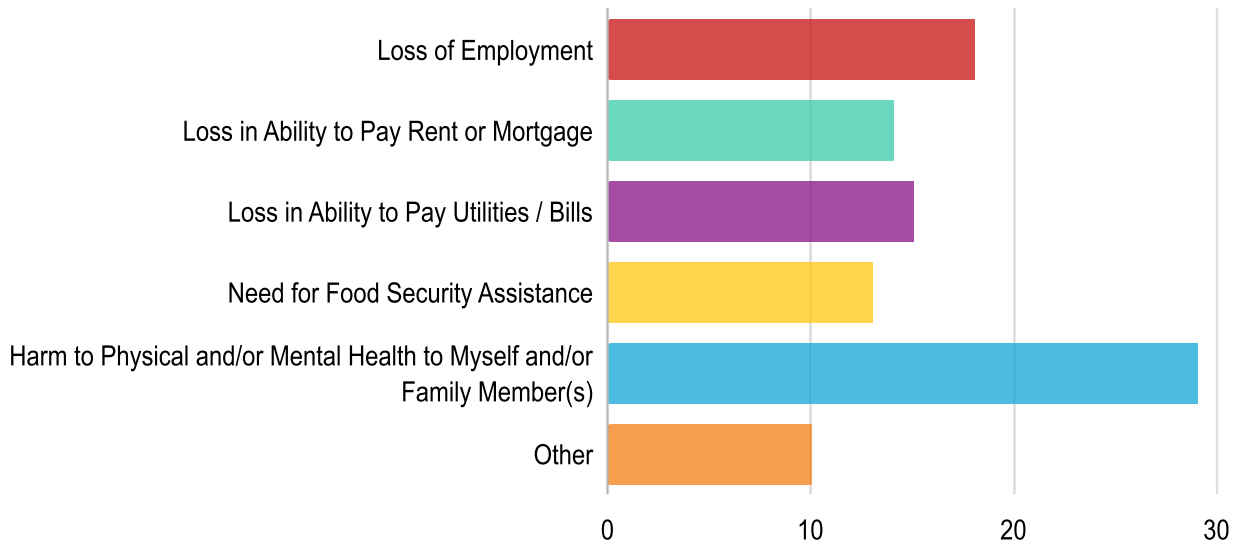
What recreational facilities would you most like to see in St. Tammany Parish?



Rank	Answers	1	2	3	4	Average score	
1	Walking Path	33.72% 29	26.74% 23	26.74% 23	9.3% 8	3.78	3.49% 3
2	Public Park Space (including Childrens' Playgrounds)	26.74% 23	19.77% 17	29.07% 25	13.95% 12	3.38	
3	Bicycle Path	15.12% 13	27.91% 24	16.28% 14	24.42% 21	3.01	16.28% 14
4	Splash Park	12.79% 11	10.47% 9	18.6% 16	34.88% 30	2.55	
5	Skate Park	11.63% 10	15.12% 13	9.3% 8	17.44% 15	2.28	46.51% 40

Answered: 86 Skipped: 4

Did you or your household (including non-family household members) face hardships d...



Answers

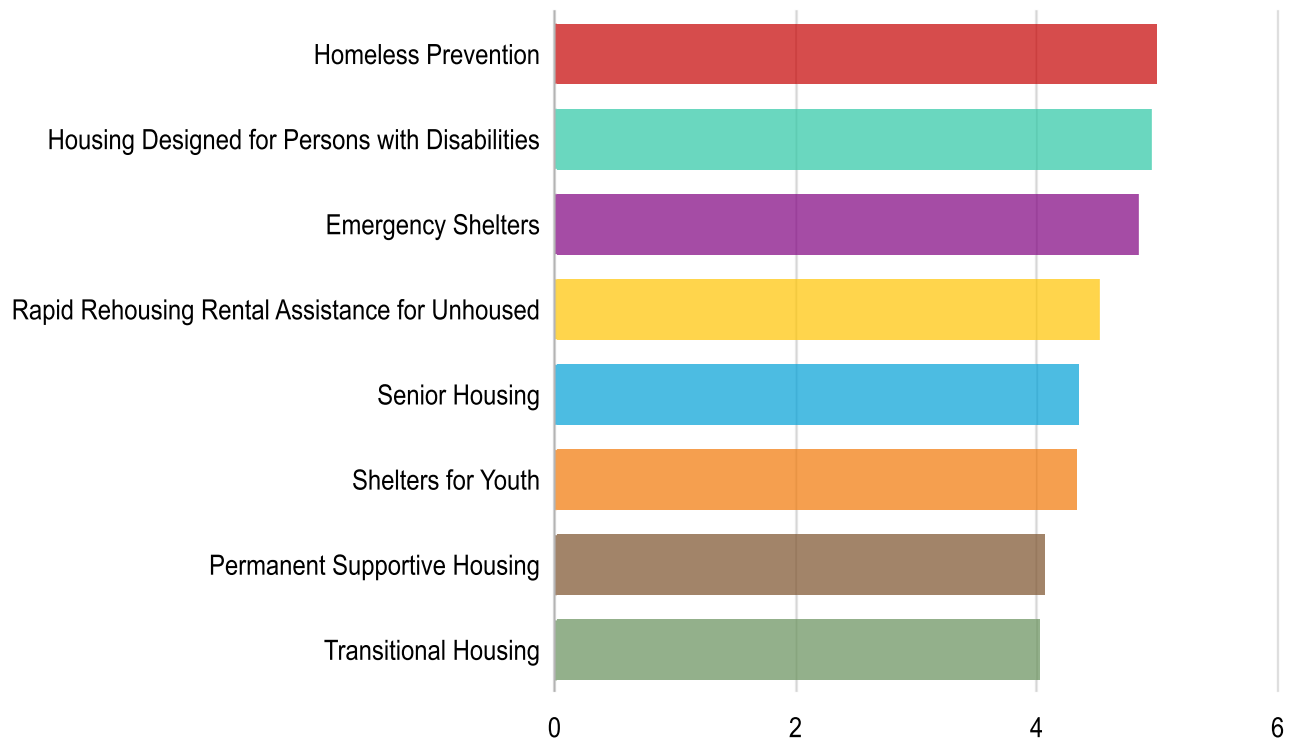
Count

Percentage

Answers	Count	Percentage
Loss of Employment	18	20%
Loss in Ability to Pay Rent or Mortgage	14	15.56%
Loss in Ability to Pay Utilities / Bills	15	16.67%
Need for Food Security Assistance	13	14.44%
Harm to Physical and/or Mental Health to Myself and/or Family Member(s)	29	32.22%
Other	10	11.11%

Answered: 51 Skipped: 39

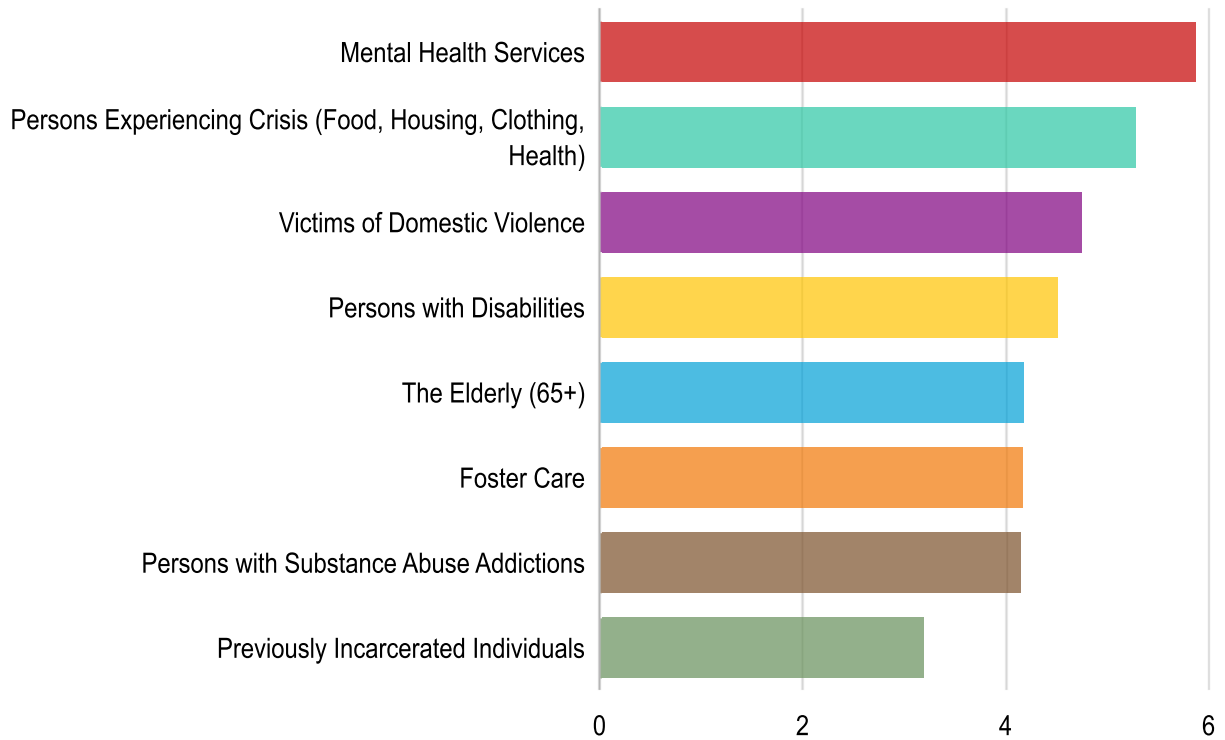
Please rank the need for the HOUSING types for special needs populations in ...



Rank	Answers	1	2	3	4	5	Average score
1	Homeless Prevention	19.05% 16	15.48% 13	13.1% 11	10.71% 9	11.9% 10	9.52% 8 4.99
2	Housing Designed for Persons with Disabilities	13.1% 11	19.05% 16	11.9% 10	10.71% 9	19.05% 16	9.52 4.94
3	Emergency Shelters	17.86% 15	10.71% 9	16.67% 14	16.67% 14	5.95% 5	10.71% 9 4.83
4	Rapid Rehousing Rental Assistance for Unhoused	14.29% 12	13.1% 11	8.33% 7	9.52% 8	17.86% 15	10.71 4.51
5	Senior Housing	10.71% 9	9.52% 8	17.86% 15	10.71% 9	7.14% 6	16.67% 14 4.33
6	Shelters for Youth	9.52% 8	10.71% 9	10.71% 9	16.67% 14	14.29% 12	11.9 4.32

Answered: 84 Skipped: 6

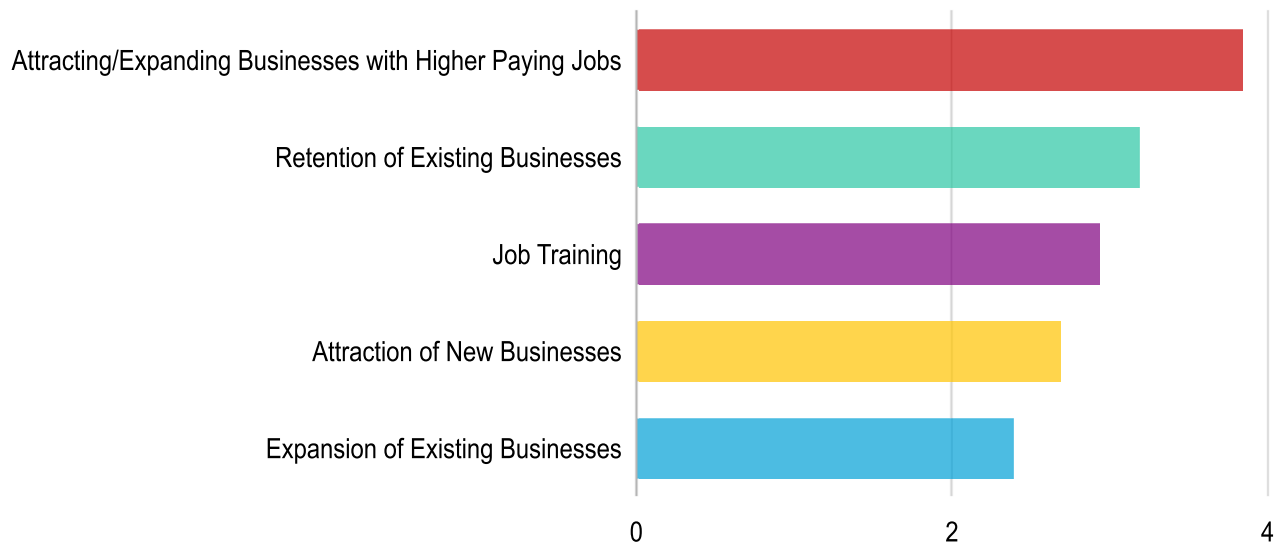
Please rank the need for SERVICES & FACILITIES for each of the following...



Rank	Answers	1	2	3	4	5	Average score	
1	Mental Health Services	34.52%	15.48%	11.9%	10.71%	7.14%	10.71%	5.95%
		29	13	10	9	6	9	5
2	Persons Experiencing Crisis (Food, Housing, Clothing, Health)	16.67%	21.43%	14.29%	8.33%	15.48%	10.71	5.27
		14	18	12	7	13		
3	Victims of Domestic Violence	8.33%	10.71%	15.48%	25%	14.29%	11.9%	7.14%
		7	9	13	21	12	10	6
4	Persons with Disabilities	8.33%	16.67%	14.29%	9.52%	13.1%	13.1	4.50
		7	14	12	8	11		
5	The Elderly (65+)	9.52%	13.1%	14.29%	11.9%	5.95%	11.9%	10.71%
		8	11	12	10	5	10	9
6	Foster Care Services	8.33%	5.95%	8.33%	17.86%	20.24%	17.86	4.15
		7	5	7	15	17		

Answered: 84 Skipped: 6

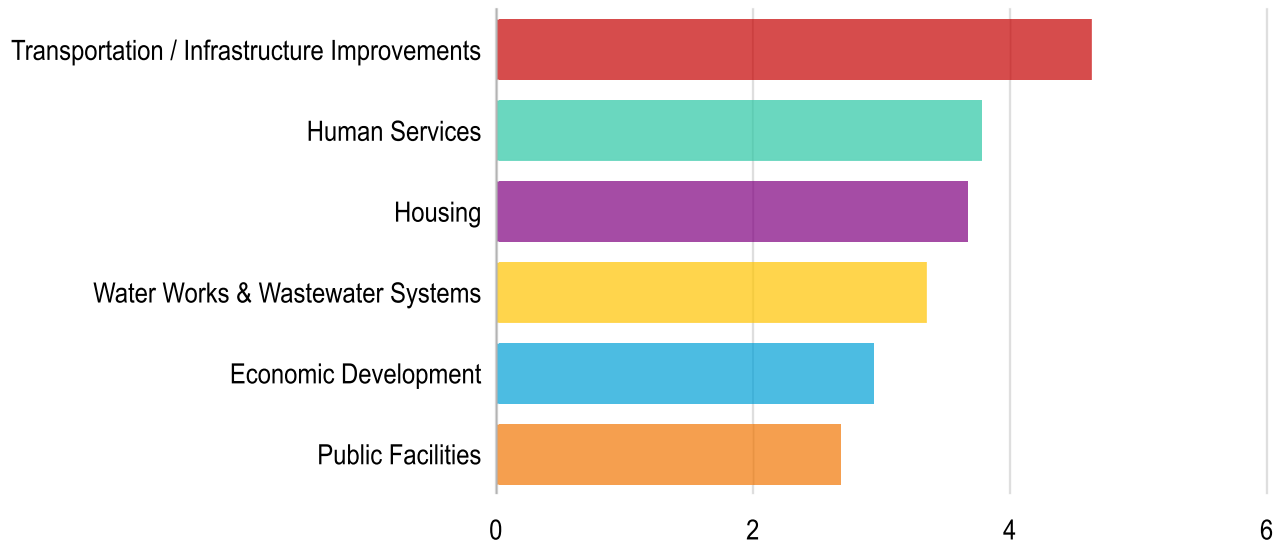
Please rank the need for the following BUSINESS & ECONOMIC DEVELOPMEN...



Rank	Answers	1	2	3	4	Average score	
1	Attracting/Expanding Businesses with Higher Paying Jobs	45.24% 38	15.48% 13	21.43% 18	13.1% 11	3.83	4.76% 4
2	Retention of Existing Businesses	17.86% 15	27.38% 23	23.81% 20	16.67% 14	3.18	
3	Job Training	20.24% 17	19.05% 16	20.24% 17	14.29% 12	2.93	26.19% 22
4	Attraction of New Businesses	14.29% 12	19.05% 16	14.29% 12	25% 21	2.68	
5	Expansion of Existing Businesses	2.38% 2	19.05% 16	20.24% 17	30.95% 26	2.38	27.38% 23

Answered: 84 Skipped: 6

Please rank how would you allocate resources among the categories below?



Rank	Answers	1	2	3	4	Average score	
1	Transportation / Infrastructure Improvements	44.32% 39	17.05% 15	17.05% 15	6.82% 6	7.95% 7	4.63 6
2	Human Services	23.86% 21	12.5% 11	20.45% 18	14.77% 13	17.05%	3.77
3	Housing	17.05% 15	20.45% 18	15.91% 14	19.32% 17	12.5% 11	3.66 14.77% 13
4	Water Works & Wastewater Systems	5.68% 5	26.14% 23	19.32% 17	14.77% 13	13.64%	3.34
5	Economic Development	5.68% 5	15.91% 14	15.91% 14	17.05% 15	19.32% 17	2.93 26.14% 23
6	Public Facilities	3.41% 3	7.95% 7	11.36% 10	27.27% 24	29.55%	2.67

Answered: 88 Skipped: 2

Please share any comments you have about housing and community development...

There is a large unhoused population in West St Tammany, but there are no resources for them. The only shelters are in East St Tammany. There is also a need for more affordable rentals when many of the jobs are retail or service sector.	1
There is a huge need for workforce housing but land and building regulations in the southern half of the parish make the cost of workforce housing prohibitive without government or non-profit capital.	1
The increase of Mental Health and youth services is a must.	1
The fact that individuals that are willing and passionate about being in service in the community barely make a reasonable wage. The vast majority of barriers to progressive, positive, consistent and equitable development throughout the population of our community are not independent of the others. Historically the spotlight focus seemed to be on one or two of these, then two more, etc., while the previous need/barrier faded from focus and slid backwards, or those responsible became self serving due to no oversight or real commitment or accountability. For any solutions to be successful the solutions must be carefully and intentionally intertwined, and be in sync.	1
Start building more expensive homes on bigger plots of land and stop building cookie cutter subdivisions homes and apartment complexes. No homeless shelters or Section 8 either. If you build trashy housing, trashy people will move in. St. Tammany residents don't want trash and crime from New Orleans moving in here. Let the poor, trashy, homeless, and criminals go live in New Orleans. If you focus on building nice, expensive homes, nice, wealthy people will live here.	1
Safe lower income neighborhoods need to be developed instead of the high income subdivisions that most of us can't afford.	1
reassessing flood mitigation plans when large building or multiple development go up. Traffic everywhere is bad and its hard to move around the parish. community perception that new is bad.	1
Need to get panhandlers off the streets	1
Need to educate around the NIMBY issue.	1
Need for a St. Tammany Parish Health and Wellness Coalition with subcommittees to develop strategic plans addressing these issues. Develop Mayor's Wellness Councils to oversee and develop city community coalitions to take the strategic plans address to meet for each specific city to broaden the reach and impact. This could work with Healthier Northshore to expand current efforts but to expand efforts and work to include residents and organizations of each city instead of just broad-based. Each city, town would have their own group to move forward the overall initiatives to their local residents and include them in the process. This coalition would be the umbrella coalition for work being done in each city or town. This would greatly engage local and more residents in the process thus expanding impact.	1

NA	1
More financial support for nonprofits serving the community	1
More affordable apartments and single family homes	1
Linking and networking between the different companies to make access to resources easily obtainable.	1
It was difficult to rank these because they are all equally important.	1
I work at the Good Samaritan Ministry and see the needs of hard working people every day. Inflation has decimated their efforts to stay afloat. Affordable childcare is another big issue and a solution could be modeled after Kinship Care if opened up to non-family members.	1
I stated them above.	1
I have an adult son who has been homeless due to lack of mental healthcare and lack of finances. There are no shelters for mentally disabled residents.	1
Housing is a big problem	1
Get the input of underserved, working poor, economically challenged, and distressed communities. Do a formal survey as the census is done. Ask them what will help their communities. Also, it wouldn't hurt to see more minorities, women, and people from underserved communities in leadership roles. That will take outreach and ultimately, relationship building. Having an all white male presence in this parish, "leading" almost everything, isn't going to bring about meaningful change for everyone. And, I'm white. But I know we need to be more inclusive...and that takes hard, soul-searching, compassionate work.	1
Can we please stop building D.R. Horton and other low-quality houses? I have no interest in neighborhoods that plopp the houses 5 feet apart from each other. (Ex. Bonterra)	1
Both of my sons have opted to attend college out of state and stay away. The area looks and behaves like a third world country. You have destroyed what used to be a nice place to live with ideal quality of life. I have been hearing about "rapid growth" to this area since 1993, but nothing has been done about it.	1
As long as the Covid hoax, lockdowns all over the world, intentional destruction of production facilities, and supply chain issues exist - materials will cost far more than they should and will not even be available. The cost of goods and services - the cost of materials is ridiculous, and must come back down in order to build more homes and renovate existing homes.	1

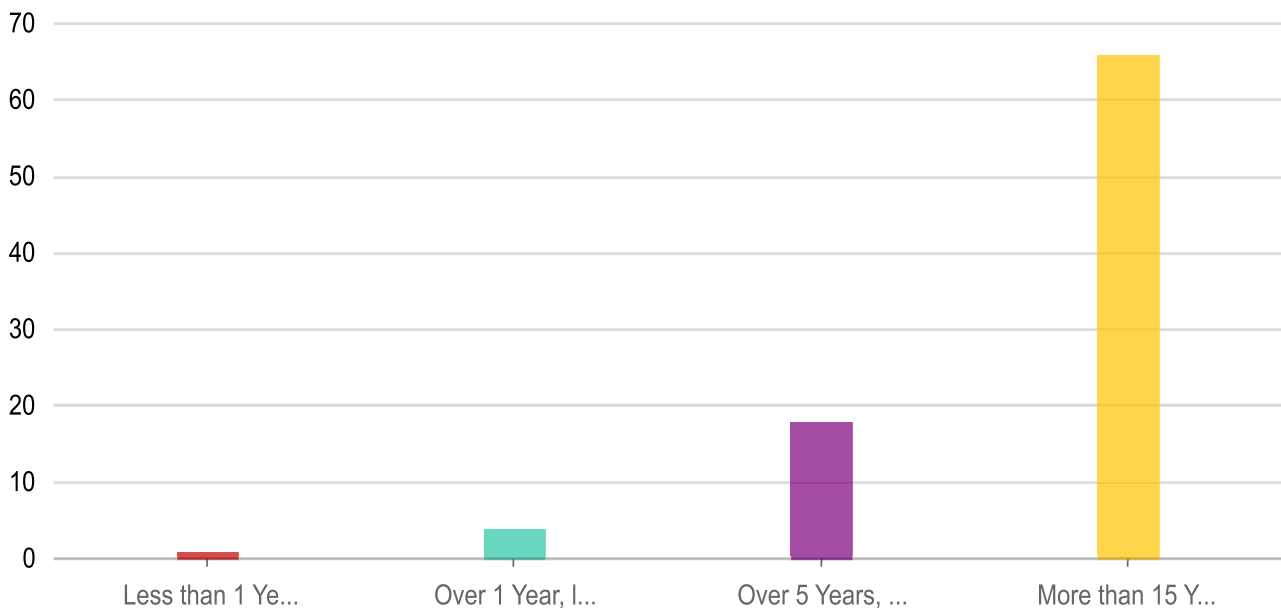
?

1

We have alot of facilities competing against one another for numbers over quality. We need to work together in alignment that the goal is to HELP people get the resources they need. With our parish being one of the greater ranking parishes in the state we still have gaps in many facets. We need to do better when focusing on the nature of how we think we are helping people in this parish- instead of looking at money and numbers.

Answered: 33 Skipped: 57

How long have you lived in St. Tammany Parish?



Answers

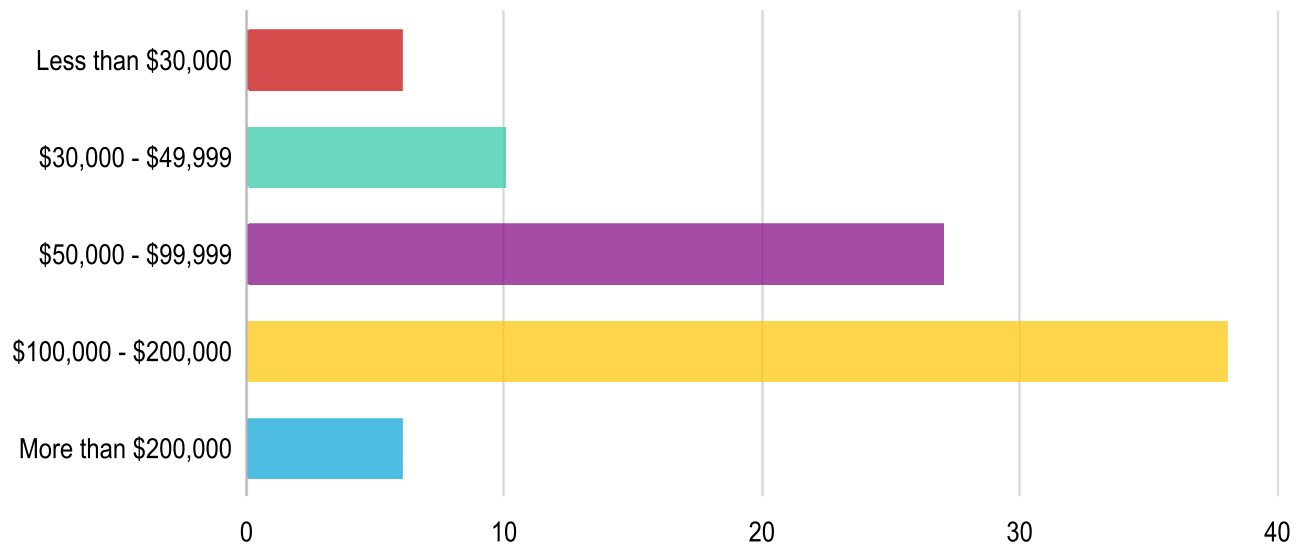
Count

Percentage

Answers	Count	Percentage
Less than 1 Year	1	1.11%
Over 1 Year, less than 5 Years	4	4.44%
Over 5 Years, less than 15 Years	18	20%
More than 15 Years	66	73.33%

Answered: 88 Skipped: 2

What is your annual household income?



Answers

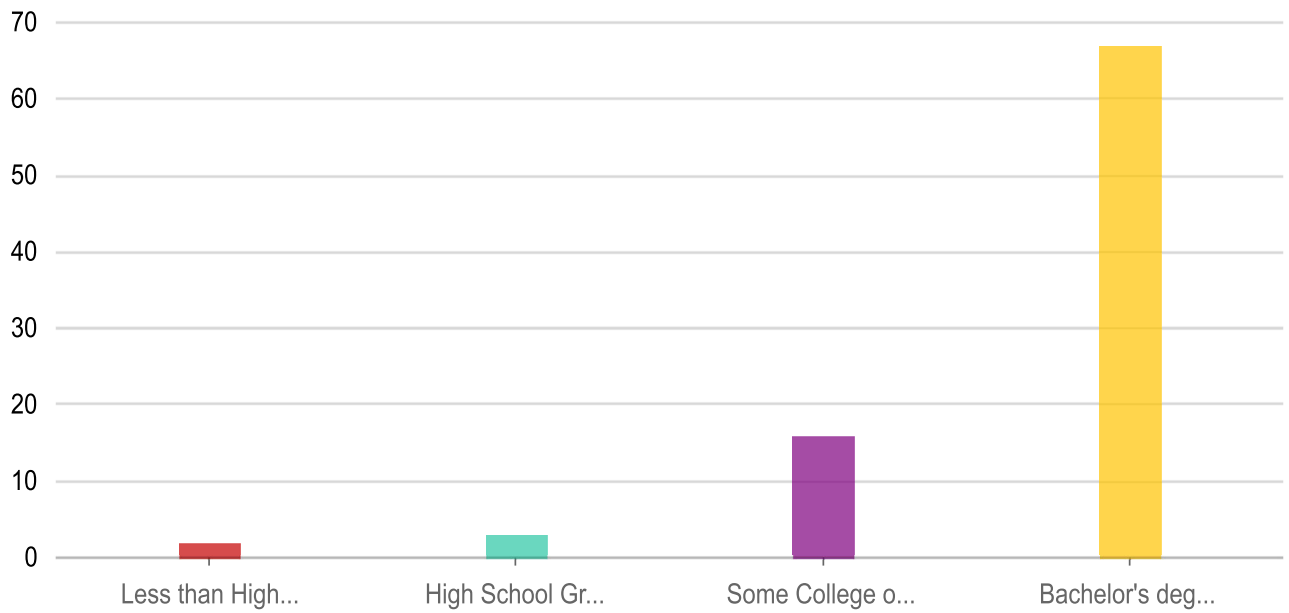
Count

Percentage

Less than \$30,000	6	6.67%
\$30,000 - \$49,999	10	11.11%
\$50,000 - \$99,999	27	30%
\$100,000 - \$200,000	38	42.22%
More than \$200,000	6	6.67%

Answered: 87 Skipped: 3

What is your highest level of education?



Answers

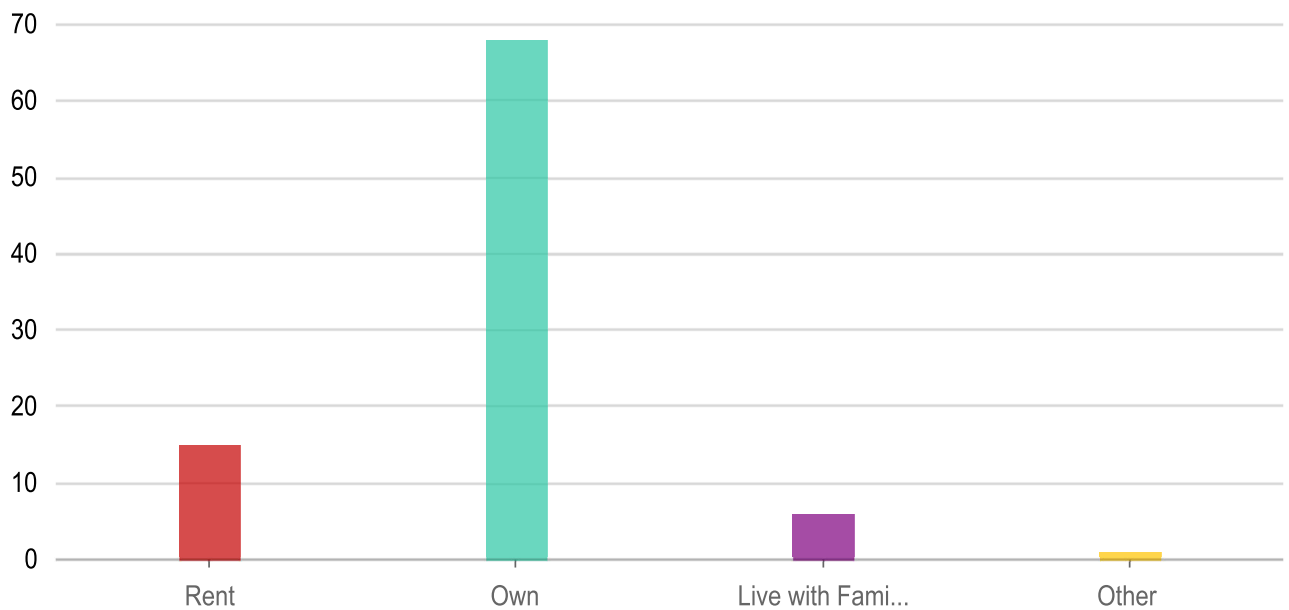
Count

Percentage

Answers	Count	Percentage
Less than High School Graduate	2	2.22%
High School Graduate	3	3.33%
Some College or Associates Degree	16	17.78%
Bachelor's degree or Higher	67	74.44%

Answered: 88 Skipped: 2

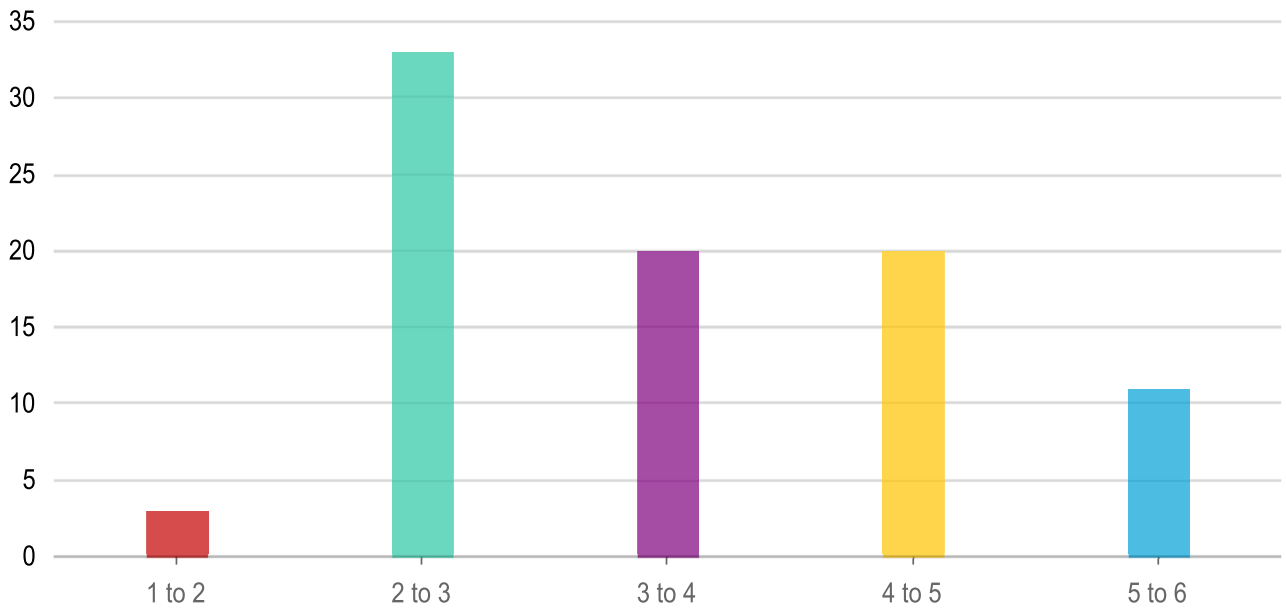
Do You...



Answers**Count****Percentage**

Rent	15	16.67%
Own	68	75.56%
Live with Family or Friends (without paying rent / mortgage)	6	6.67%
Other	1	1.11%

Answered: 88 Skipped: 2

How many people permanently reside in your home?**Stats****Value**

Min.	1
Max.	6
Avg.	3.04597701149425
Sum.	265

Answered: 87 Skipped: 3

What is your Zip Code? *



Stats

Value

Min.	70,420
Max.	70,471
Avg.	70,448.5333333333
Sum.	6,340,368

Answered: 90 Skipped: 0



St. Tammany Parish Community Needs Assessment

April 2023

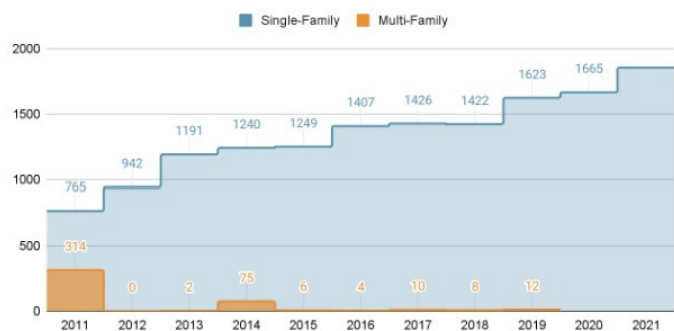
What is a Community Needs Assessment?

St. Tammany Parish Government's Department of Health & Human Services & Department of Grants receives federal grants from the Department of Housing and Urban Development (or HUD) that require regular comprehensive community assessments to inventory community needs and available resources and partners. The information collected and analyzed as part of the Community Needs Assessment supports local grant program scoping, development, and funding decision-making for years to come. Key findings of the draft Community Needs Assessment are summarized below to support public review and comment.

Housing

Affordable housing options for first time homebuyers and the aging population are a high priority need parish wide. Contributing factors include but are not limited to (1) housing supply does not yet meet the demand for residential units (right), resulting in families facing prohibitively high housing prices both to purchase homes and to rent units, and (2) rising flood and homeowners' insurance rates contribute to increased cost burdens.

Residential Building Permits in St. Tammany Parish (2011 - 2021)



Source: University of New Orleans Institute for Economic Development and Real Estate Research Annual Report 2022.

Economic Development

32% of workers work outside the parish,



including 40% of men and 23.1% of women



While St. Tammany enjoys relatively low unemployment rates, low-to-moderate income Parish residents appear to travel farther distances for work, have limited childcare support, and less time for leisure and family.

Healthcare

There remains a need for mental, behavioral health, and substance abuse services in the Parish. While there has been an increase in Federally Qualified Health Clinics (low-cost clinics) in the Parish in recent years, such as the development and expansion of the Safe Haven facility, a significantly high rate of suicide and drug overdose deaths in the parish suggest there is more work to be done.

Education

The St. Tammany Parish school system receives high state ratings and generally serves residents well; however, there remains significant gaps in services provided for early childhood education and childcare. **Subsidized or low-cost early childhood education should be prioritized as strong programs can support household income and stability**