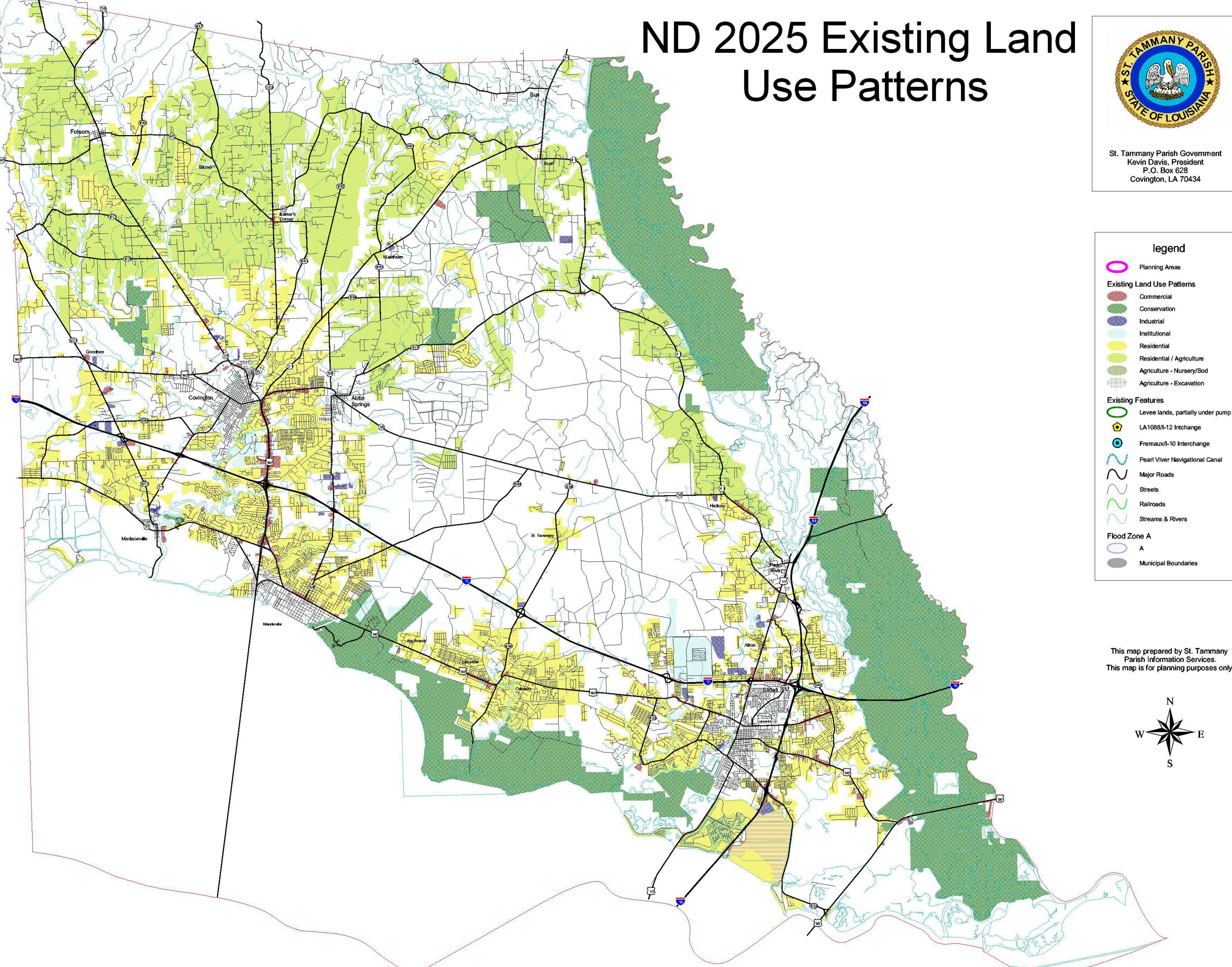


ND 2025 Existing Land Use Patterns



St. Tammany Parish Government
Kevin Davis, President
P.O. Box 628
Covington, LA 70434



legend

- Planning Areas
- Existing Land Use Patterns
 - Commercial
 - Conservation
 - Industrial
 - Institutional
 - Residential
 - Residential / Agriculture
 - Agriculture - Nursery/Sod
 - Agriculture - Excavation
- Existing Features
 - Levee lands, partially under pump
 - LA1088/I-12 Intchange
 - Fremaux/I-10 Interchange
 - Pearl River Navigational Canal
 - Major Roads
 - Streets
 - Railroads
 - Streams & Rivers
- Flood Zone A
 - A
- Municipal Boundaries

This map prepared by St. Tammany Parish Information Services.
This map is for planning purposes only.

